



**Technische
Universität
Braunschweig**

Technische Universität Braunschweig Facts and Figures 2017

TU Braunschweig in figures

| | |
|---------------------------|--|
| Students: | 20,116 in the winter semester 2017/2018, including <ul style="list-style-type: none">• 7,690 women• 2,941 international students• 5,751 first-semester students• 16,156 STEM students |
| Graduates: | 3,157, including 1,302 women |
| Doctorates: | 297, including 104 women |
| Faculty and staff: | 6,372 staff members, including <ul style="list-style-type: none">• 2,510 women• 3,684 full-time• 2,688 part-time• 241 professors• 1,981 scientific staff• 1,359 technical and administrative staff members |
| Finances: | EUR 335.1 M finance volume, including <ul style="list-style-type: none">• EUR 90.8 M third-party funding |
| Infrastructure: | Total <ul style="list-style-type: none">• 183 buildings• 270,169 m² useful area 1 to 6 (corresponding to 38 football fields)• 33,457,600 kWh electricity (corresponds to the consumption of approx. 7,044 4-person households)• 41,830,200 kWh district heat (corresponds to the consumption of approx. 2,081 4-person households) |

Welcome

Dear Sir or Madam,

2017 was another successful business year for TU Braunschweig. The number of students reached a new all-time high in the winter semester 2017/2018. We now have 20,116 students. The TU's finance volume broke its old record as well, climbing to EUR 335 M.

With this overview of facts and figures 2017, Technische Universität Braunschweig once again provides comprehensive statistical data on many different subject areas. As in the previous year, you can find a comparison between the number of applications, student places and first-semester students for the WS 2017/2018 as compared to the WS 2016/2017. We have continued the comparison of our students' age, broken down by degrees, the origins of our students and our funds.

Tables and figures have proven their worth in illustrating the figures and key data of the TU. They reflect the development of the students, graduates and finances of the TU Braunschweig in the last five years particularly well.

The facts and figures are supplemented by online information under www.tu-braunschweig.de/wirueberuns/fakten/zahlen.

If you have any questions or suggestions about the facts and figures, please do not hesitate to contact the university controlling.

I hope that you will find many interesting insights in the world of figures of Technische Universität Braunschweig.



Dietmar Smyrek

Full-time vice president of Technische Universität Braunschweig

Contents

TU Braunschweig in figures

Welcome

1 Students

| | |
|--|----|
| 1.1 Students, total | 1 |
| 1.2 Students in the 1st study semester | 10 |
| 1.3 Number of applications, student places and first-semester students | 14 |
| 1.4 International students | 18 |

2 Graduates

| | |
|--------------------------------|----|
| 2.1 Graduates, total | 21 |
| 2.2 Doctorates | 23 |
| 2.3 Postdoctoral degrees | 23 |

| | |
|---------------|----|
| 3 Staff | 24 |
|---------------|----|

| | |
|------------------|----|
| 4 Finances | 26 |
|------------------|----|

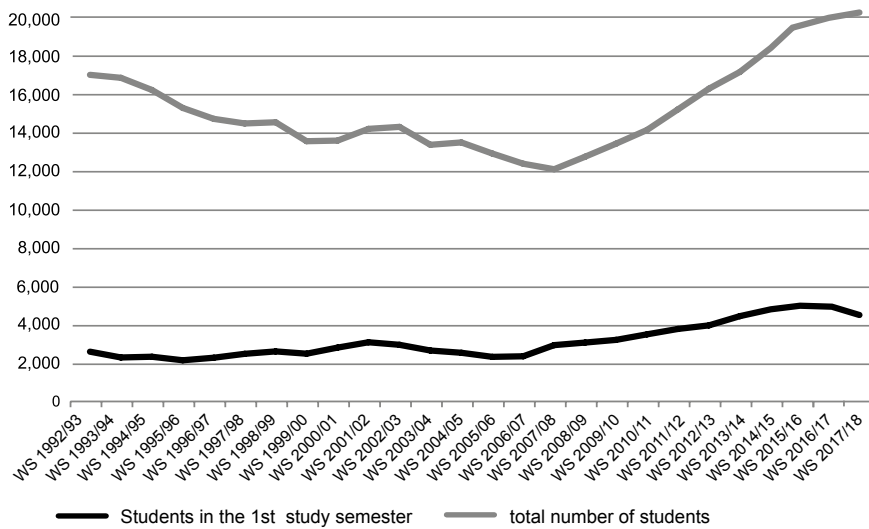
| | |
|---|----|
| 4.1 Profit and loss statement (PaL) | 27 |
| 4.2 Balance sheet | 28 |

| | |
|------------------|----|
| 5 Glossary | 29 |
|------------------|----|

1 Students

1.1 Students, total

Students in the 1st study semester and total number of students since the winter semester 1992/1993



| | Students in the 1st study semester | Total number of students |
|--------------|------------------------------------|--------------------------|
| WS 1992/1993 | 2,436 | 17,042 |
| WS 1993/1994 | 2,123 | 16,884 |
| WS 1994/1995 | 2,162 | 16,238 |
| WS 1995/1996 | 1,971 | 15,280 |
| WS 1996/1997 | 2,109 | 14,699 |
| WS 1997/1998 | 2,320 | 14,454 |
| WS 1998/1999 | 2,451 | 14,517 |
| WS 1999/2000 | 2,327 | 13,509 |
| WS 2000/2001 | 2,657 | 13,542 |
| WS 2001/2002 | 2,946 | 14,166 |
| WS 2002/2003 | 2,809 | 14,272 |
| WS 2003/2004 | 2,499 | 13,318 |
| WS 2004/2005 | 2,377 | 13,444 |
| WS 2005/2006 | 2,156 | 12,854 |
| WS 2006/2007 | 2,187 | 12,310 |
| WS 2007/2008 | 2,791 | 12,017 |
| WS 2008/2009 | 2,930 | 12,684 |
| WS 2009/2010 | 3,075 | 13,379 |
| WS 2010/2011 | 3,375 | 14,108 |
| WS 2011/2012 | 3,667 | 15,204 |
| WS 2012/2013 | 3,860 | 16,304 |
| WS 2013/2014 | 4,360 | 17,195 |
| WS 2014/2015 | 4,730 | 18,474 |
| WS 2015/2016 | 5,043 | 19,508 |
| WS 2016/2017 | 4,947 | 20,029 |
| WS 2017/2018 | 4,570 | 20,116 |

Development of the total number of students by faculty

| WS 2013/2014 | | | | | | | |
|----------------------|-----------|-----------|-----------|-----------|-----------|-----------|--------|
| | Faculty 1 | Faculty 2 | Faculty 3 | Faculty 4 | Faculty 5 | Faculty 6 | Total |
| Students | 2,618 | 2,881 | 3,404 | 4,692 | 1,531 | 2,069 | 17,195 |
| including women | 936 | 1,883 | 1,352 | 575 | 208 | 1,492 | 6,446 |
| including STEM | 1,729 | 2,346 | 3,404 | 4,692 | 1,531 | 306 | 14,008 |
| including STEM women | 414 | 1,438 | 1,352 | 575 | 208 | 205 | 4,192 |

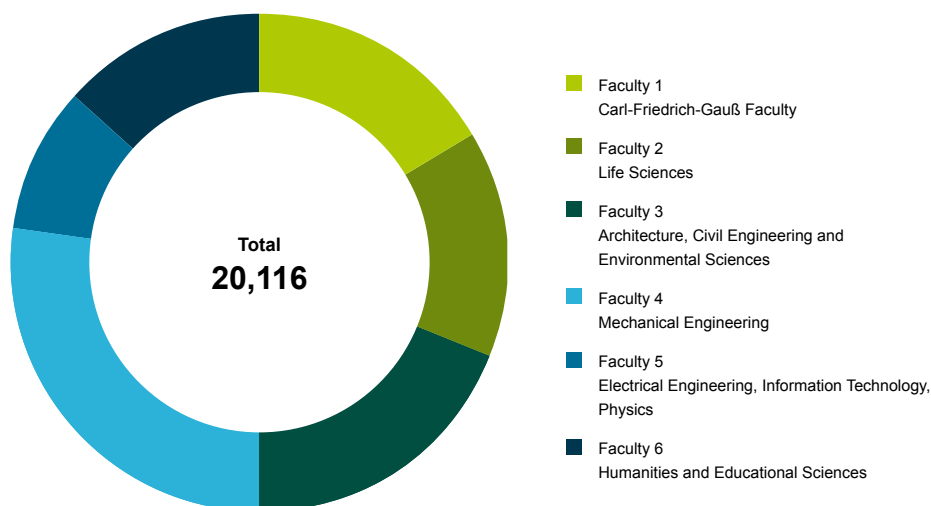
| WS 2014/2015 | | | | | | | |
|----------------------|-----------|-----------|-----------|-----------|-----------|-----------|--------|
| | Faculty 1 | Faculty 2 | Faculty 3 | Faculty 4 | Faculty 5 | Faculty 6 | Total |
| Students | 2,910 | 2,923 | 3,648 | 5,040 | 1,697 | 2,256 | 18,474 |
| including women | 1,124 | 1,899 | 1,481 | 656 | 233 | 1,651 | 7,044 |
| including STEM | 1,852 | 2,396 | 3,648 | 5,040 | 1,697 | 357 | 14,990 |
| including STEM women | 490 | 1,465 | 1,481 | 656 | 233 | 240 | 4,565 |

| WS 2015/2016 | | | | | | | |
|----------------------|-----------|-----------|-----------|-----------|-----------|-----------|--------|
| | Faculty 1 | Faculty 2 | Faculty 3 | Faculty 4 | Faculty 5 | Faculty 6 | Total |
| Students | 3,095 | 3,005 | 3,767 | 5,331 | 1,848 | 2,462 | 19,508 |
| including women | 1,124 | 1,944 | 1,480 | 748 | 282 | 1,791 | 7,369 |
| including STEM | 2,058 | 2,471 | 3,767 | 5,331 | 1,848 | 432 | 15,907 |
| including STEM women | 521 | 1,499 | 1,480 | 748 | 282 | 291 | 4,821 |

| WS 2016/2017 | | | | | | | |
|----------------------|-----------|-----------|-----------|-----------|-----------|-----------|--------|
| | Faculty 1 | Faculty 2 | Faculty 3 | Faculty 4 | Faculty 5 | Faculty 6 | Total |
| Students | 3,307 | 2,931 | 3,833 | 5,435 | 1,899 | 2,624 | 20,029 |
| including women | 1,219 | 1,875 | 1,519 | 798 | 290 | 1,910 | 7,611 |
| including STEM | 2,144 | 2,411 | 3,833 | 5,435 | 1,899 | 477 | 16,199 |
| including STEM women | 540 | 1,445 | 1,519 | 798 | 290 | 328 | 4,920 |

| WS 2017/2018 | | | | | | | |
|----------------------|-----------|-----------|-----------|-----------|-----------|-----------|--------|
| | Faculty 1 | Faculty 2 | Faculty 3 | Faculty 4 | Faculty 5 | Faculty 6 | Total |
| Students | 3,341 | 2,904 | 3,785 | 5,348 | 1,991 | 2,747 | 20,116 |
| including women | 1,215 | 1,881 | 1,526 | 813 | 312 | 1,943 | 7,690 |
| including STEM | 2,136 | 2,385 | 3,785 | 5,348 | 1,991 | 511 | 16,156 |
| including STEM women | 515 | 1,442 | 1,526 | 813 | 312 | 331 | 4,939 |

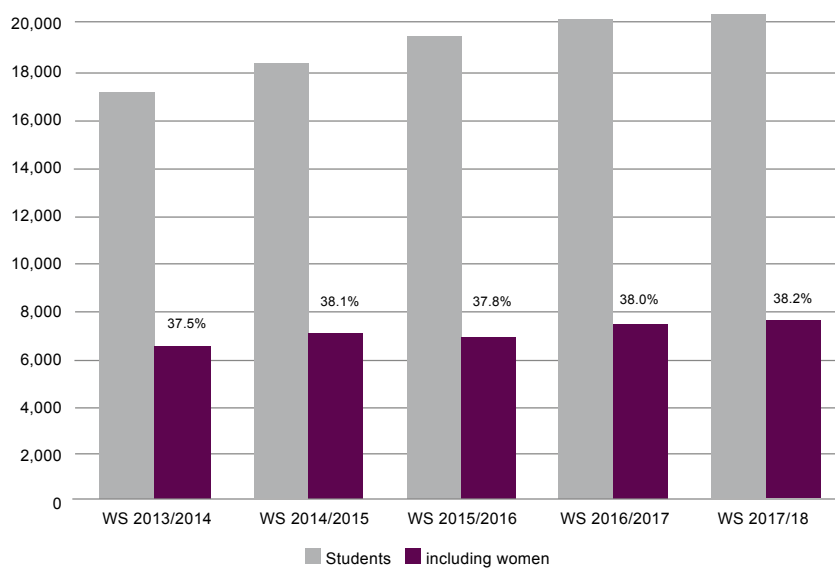
Total number of students by faculty in the winter semester 2017/2018



| | Faculty 1 | Faculty 2 | Faculty 3 | Faculty 4 | Faculty 5 | Faculty 6 | Total |
|----------|-----------|-----------|-----------|-----------|-----------|-----------|--------|
| Students | 3,341 | 2,904 | 3,785 | 5,348 | 1,991 | 2,747 | 20,116 |
| Percent* | 16.6% | 14.4% | 18.8% | 26.6% | 9.9% | 13.7% | 100% |

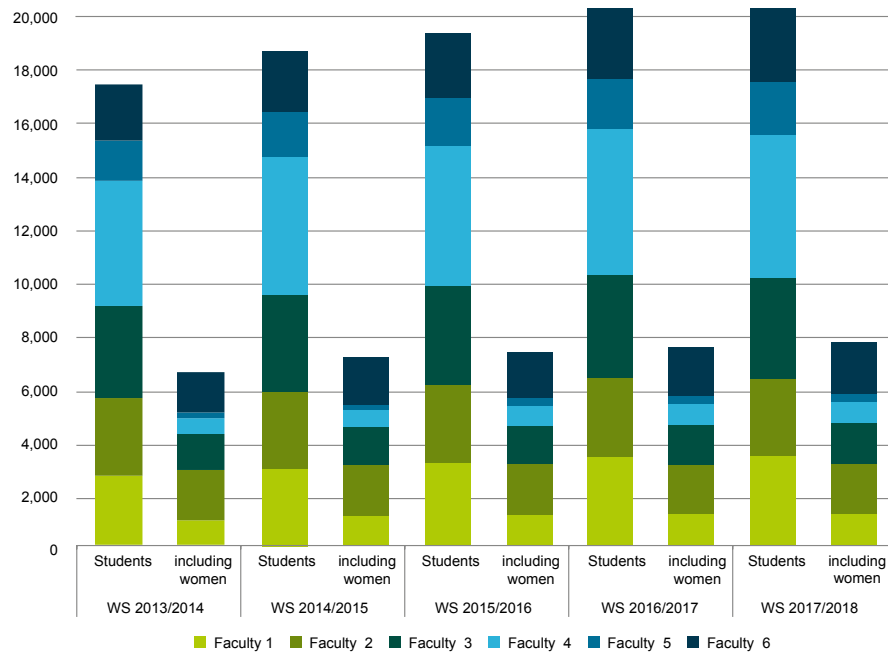
* Share in the total number of students

Development of the total number of students



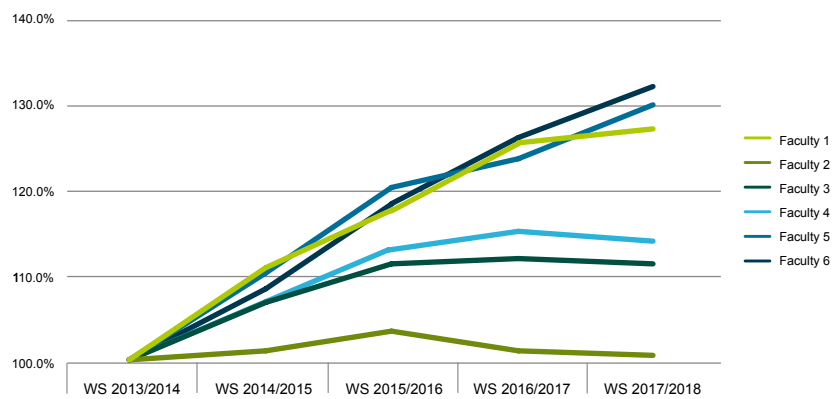
| | WS 2013/2014 | WS 2014/2015 | WS 2015/2016 | WS 2016/17 | WS 2017/18 |
|-----------------|--------------|--------------|--------------|------------|------------|
| Students | 17,195 | 18,474 | 19,508 | 20,029 | 20,116 |
| including women | 6,446 | 7,044 | 7,369 | 7,611 | 7,690 |
| Percent | 37.5% | 38.1% | 37.8% | 38.0% | 38.2% |

Development of the total number of students by faculty



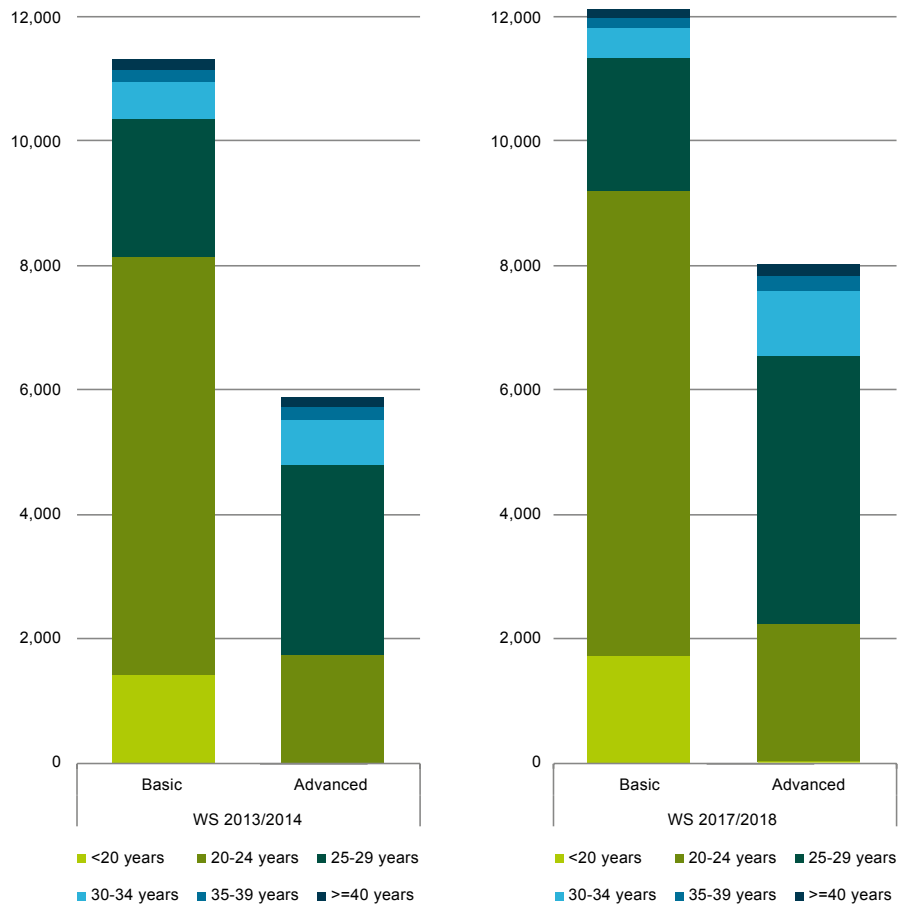
For figures, see page 2

Development of the total number of students by faculty in percent



For figures, see page 2

Age of the total students by study programmes in the WS 2013/2014 and WS 2017/2018



Basic study programmes

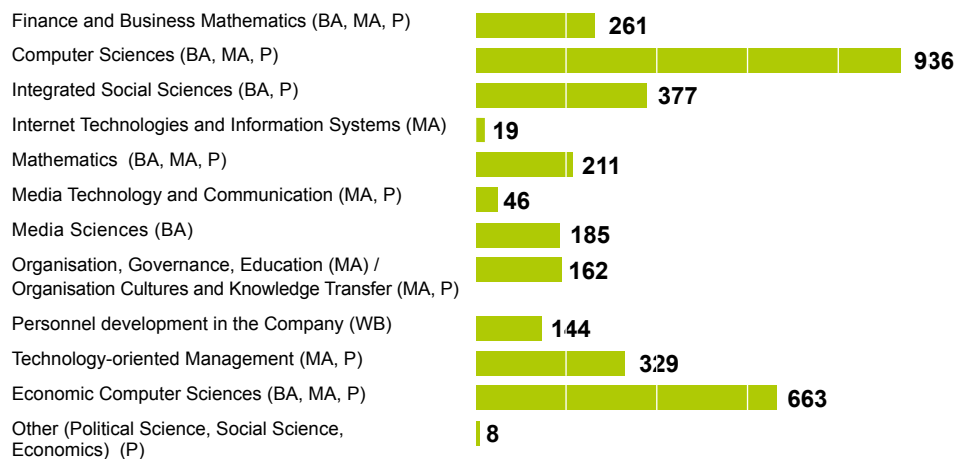
| | Age | <20 | 20-24 | 25-29 | 30-34 | 35-39 | >=40 | Total |
|--------------|----------|-------|-------|-------|-------|-------|------|--------|
| WS 2013/2014 | Students | 1,407 | 6,718 | 2,220 | 601 | 192 | 180 | 11,318 |
| | Percent | 12.4% | 59.4% | 19.6% | 5.3% | 1.7% | 1.6% | |
| WS 2017/2018 | Students | 1,723 | 7,461 | 2,136 | 482 | 165 | 136 | 12,103 |
| | Percent | 14.2% | 61.6% | 17.6% | 4.0% | 1.4% | 1.1% | |

Advanced study programmes

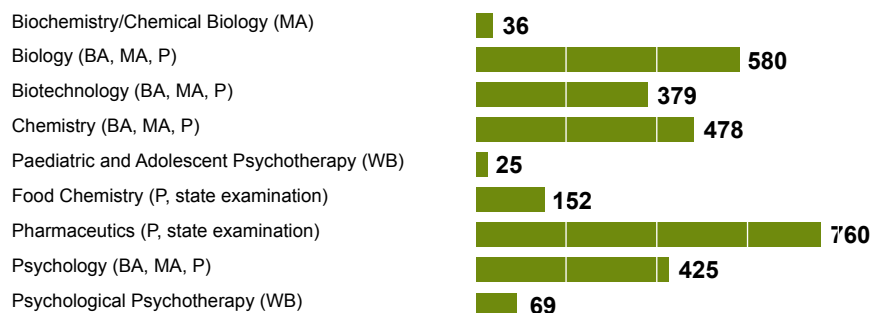
| | Age | <20 | 20-24 | 25-29 | 30-34 | 35-39 | >=40 | Total |
|--------------|----------|------|-------|-------|-------|-------|------|-------|
| WS 2013/2014 | Students | 0 | 1,730 | 3,063 | 717 | 205 | 162 | 5,877 |
| | Percent | 0.0% | 29.4% | 52.1% | 12.2% | 3.5% | 2.8% | |
| WS 2017/2018 | Students | 1 | 2,218 | 4,316 | 1,048 | 239 | 191 | 8,013 |
| | Percent | 0.0% | 27.7% | 53.9% | 13.1% | 3.0% | 2.4% | |

Number of students by study programmes in the winter semester 2017/2018

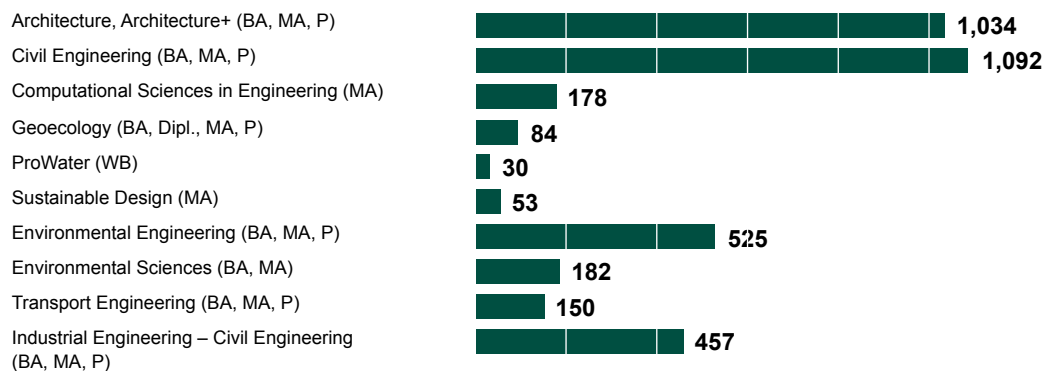
Faculty 1 | Carl-Friedrich-Gauß Faculty



Faculty 2 | Life Sciences

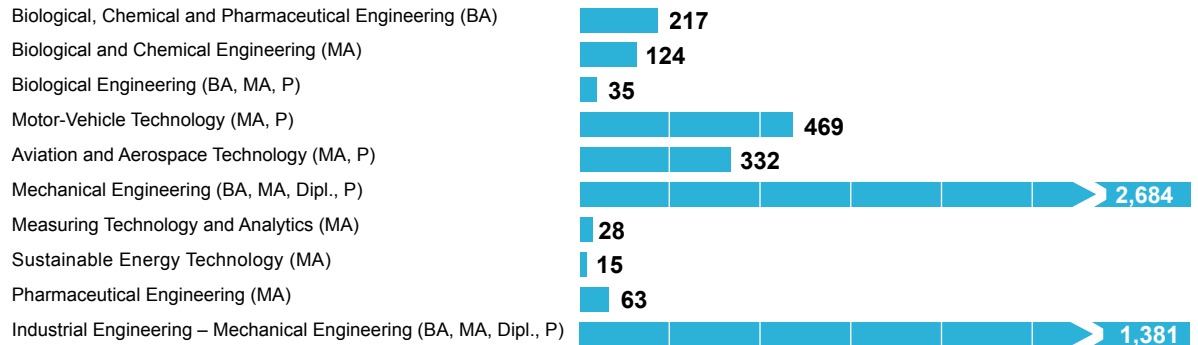


Faculty 3 | Architecture, Civil Engineering and Environmental Sciences

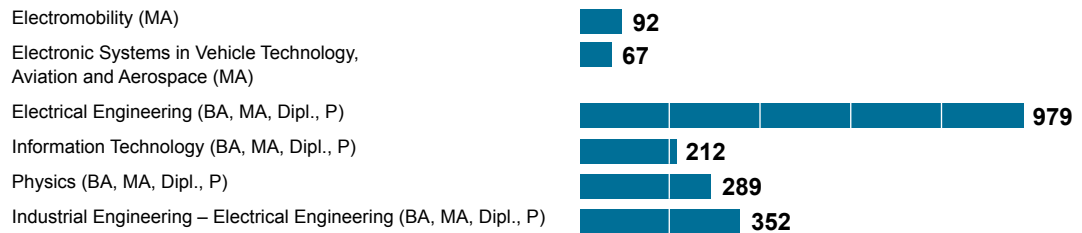


Number of students by study programmes in the winter semester 2017/2018

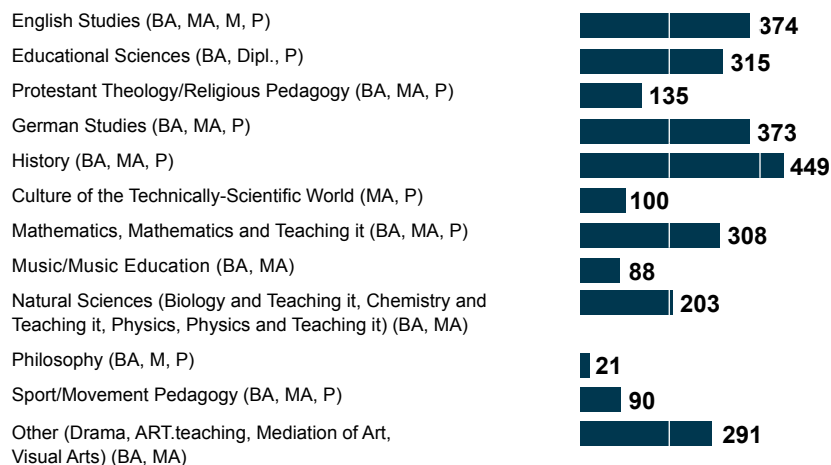
Faculty 4 | Mechanical Engineering



Faculty 5 | Electrical Engineering, Information Technology, Physics



Faculty 6 | Humanities and Educational Sciences



BA Bachelor's Degree/Double
Dipl. Major Bachelor's Degree Diploma

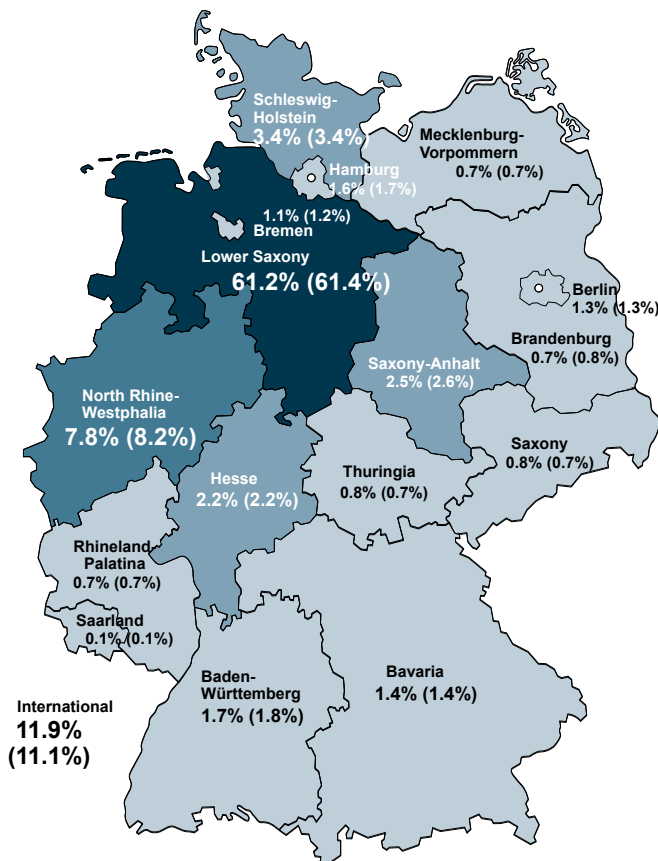
M Magister
MA Master's Degree

P Doctorate
WB Continuing education

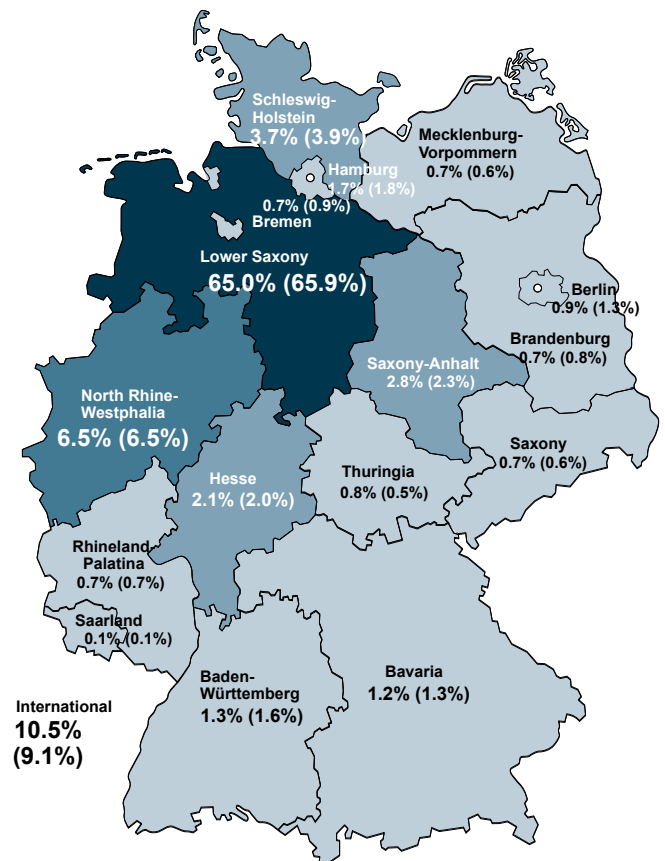
Architecture+: 8 semesters Bachelor's Degree incl. one year abroad

Origin* of the students in the winter semester 2017/2018

Students, total



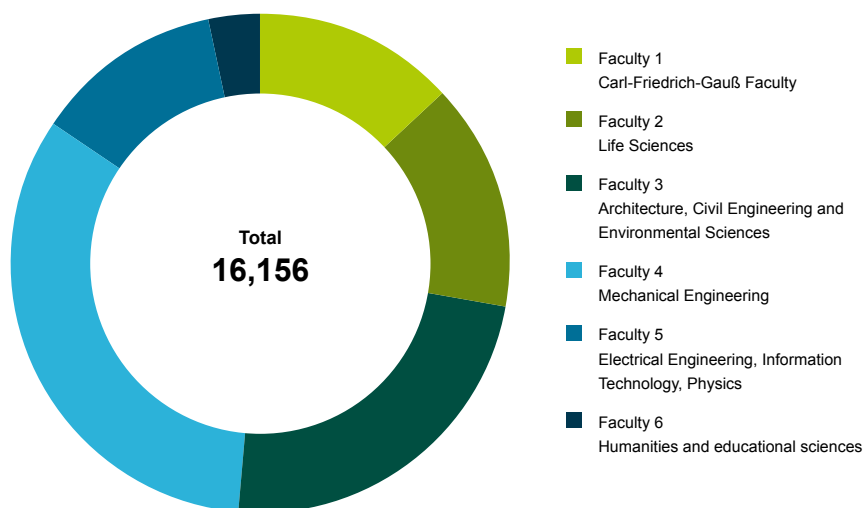
Students in the 1st study semester



© http://www.kartenwelten.de/uploads/media/D_Bundeslaender_01.eps

*Origin refers to the state where the students acquired their university access qualification. (%) prior year's figures

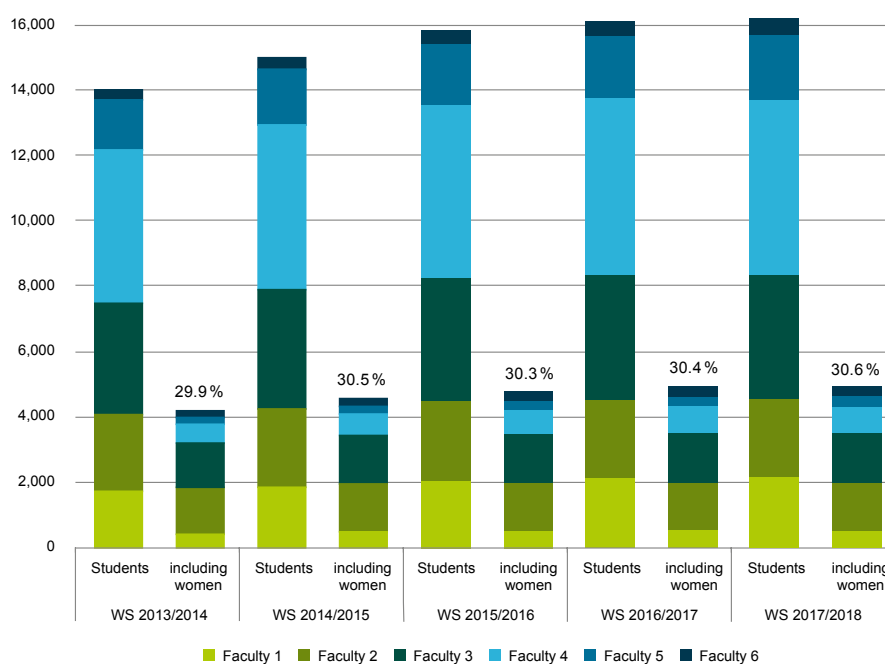
STEM-students by faculty in the winter semester 2017/2018



| | Faculty 1 | Faculty 2 | Faculty 3 | Faculty 4 | Faculty 5 | Faculty 6 | Total |
|---------------|-----------|-----------|-----------|-----------|-----------|-----------|--------|
| STEM-students | 2,136 | 2,385 | 3,785 | 5,348 | 1,991 | 511 | 16,156 |
| Percent* | 13.2% | 14.8% | 23.4% | 33.1% | 12.3% | 3.2% | 100% |

* Total share of STEM-students

Development of STEM-students by faculty



For figures, see page 2

1.2 Students in the 1st study semester

Students in the 1st study semester (FS) for the academic years* 2013 to 2017

| 2013 | | | | | | | |
|------------------------|-----------|-----------|-----------|-----------|-----------|-----------|-------|
| | Faculty 1 | Faculty 2 | Faculty 3 | Faculty 4 | Faculty 5 | Faculty 6 | Total |
| Students in the 1st FS | 818 | 815 | 1,113 | 1,406 | 453 | 709 | 5,314 |
| including women | 299 | 527 | 467 | 196 | 68 | 534 | 2,091 |
| including STEM | 561 | 660 | 1,113 | 1,406 | 453 | 123 | 4,316 |
| Including STEM women | 140 | 395 | 467 | 196 | 68 | 92 | 1,358 |

| 2014 | | | | | | | |
|------------------------|-----------|-----------|-----------|-----------|-----------|-----------|-------|
| | Faculty 1 | Faculty 2 | Faculty 3 | Faculty 4 | Faculty 5 | Faculty 6 | Total |
| Students in the 1st FS | 1,021 | 783 | 1,090 | 1,492 | 552 | 772 | 5,710 |
| including women | 416 | 510 | 447 | 232 | 78 | 584 | 2,267 |
| including STEM | 701 | 634 | 1,090 | 1,492 | 552 | 156 | 4,625 |
| Including STEM women | 218 | 386 | 447 | 232 | 78 | 108 | 1,469 |

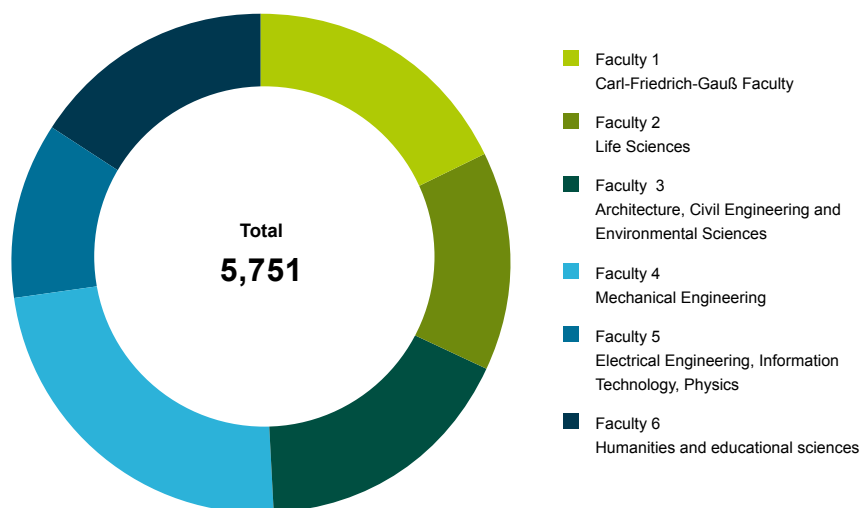
| 2015 | | | | | | | |
|------------------------|-----------|-----------|-----------|-----------|-----------|-----------|-------|
| | Faculty 1 | Faculty 2 | Faculty 3 | Faculty 4 | Faculty 5 | Faculty 6 | Total |
| Students in the 1st FS | 1,152 | 859 | 1,125 | 1,657 | 719 | 852 | 6,364 |
| including women | 411 | 555 | 466 | 269 | 131 | 645 | 2,477 |
| including STEM | 847 | 685 | 1,125 | 1,657 | 719 | 199 | 5,232 |
| Including STEM women | 239 | 413 | 466 | 269 | 131 | 141 | 1,659 |

| 2016 | | | | | | | |
|------------------------|-----------|-----------|-----------|-----------|-----------|-----------|-------|
| | Faculty 1 | Faculty 2 | Faculty 3 | Faculty 4 | Faculty 5 | Faculty 6 | Total |
| Students in the 1st FS | 1,170 | 835 | 1,105 | 1,531 | 669 | 925 | 6,235 |
| including women | 470 | 546 | 474 | 229 | 125 | 682 | 2,526 |
| including STEM | 811 | 697 | 1,105 | 1,531 | 669 | 214 | 5,027 |
| Including STEM women | 245 | 424 | 474 | 229 | 125 | 154 | 1,651 |

| 2017 | | | | | | | |
|------------------------|-----------|-----------|-----------|-----------|-----------|-----------|-------|
| | Faculty 1 | Faculty 2 | Faculty 3 | Faculty 4 | Faculty 5 | Faculty 6 | Total |
| Students in the 1st FS | 1,031 | 809 | 997 | 1,359 | 651 | 904 | 5,751 |
| including women | 396 | 529 | 430 | 238 | 123 | 633 | 2,349 |
| including STEM | 677 | 673 | 997 | 1,359 | 651 | 204 | 4,561 |
| Including STEM women | 197 | 414 | 430 | 238 | 123 | 127 | 1,529 |

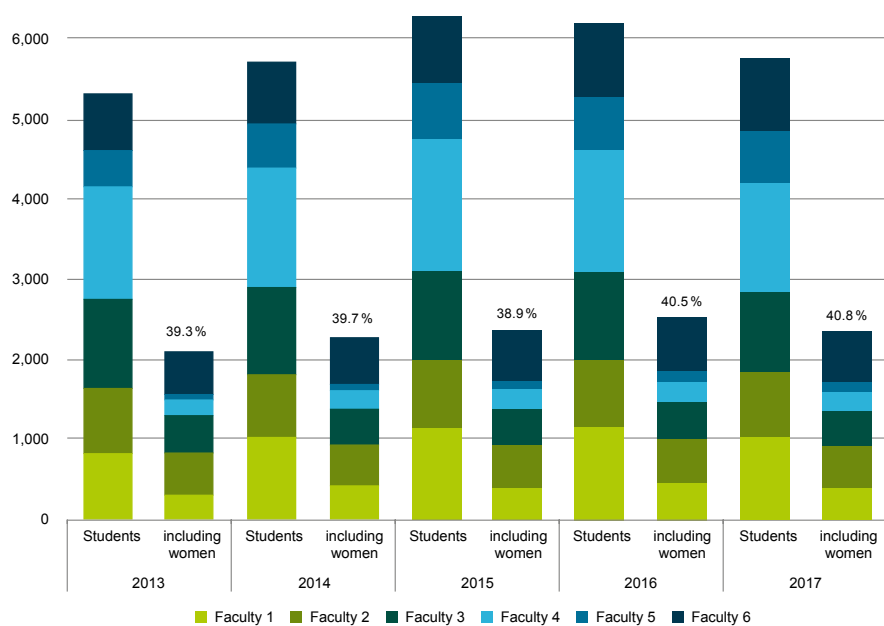
* Academic year: Summer semester plus subsequent winter semester (e.g. academic year 2017: SoSe 2017 + WS 2017/2018)

Students in the 1st study semester by faculty in the academic year 2017



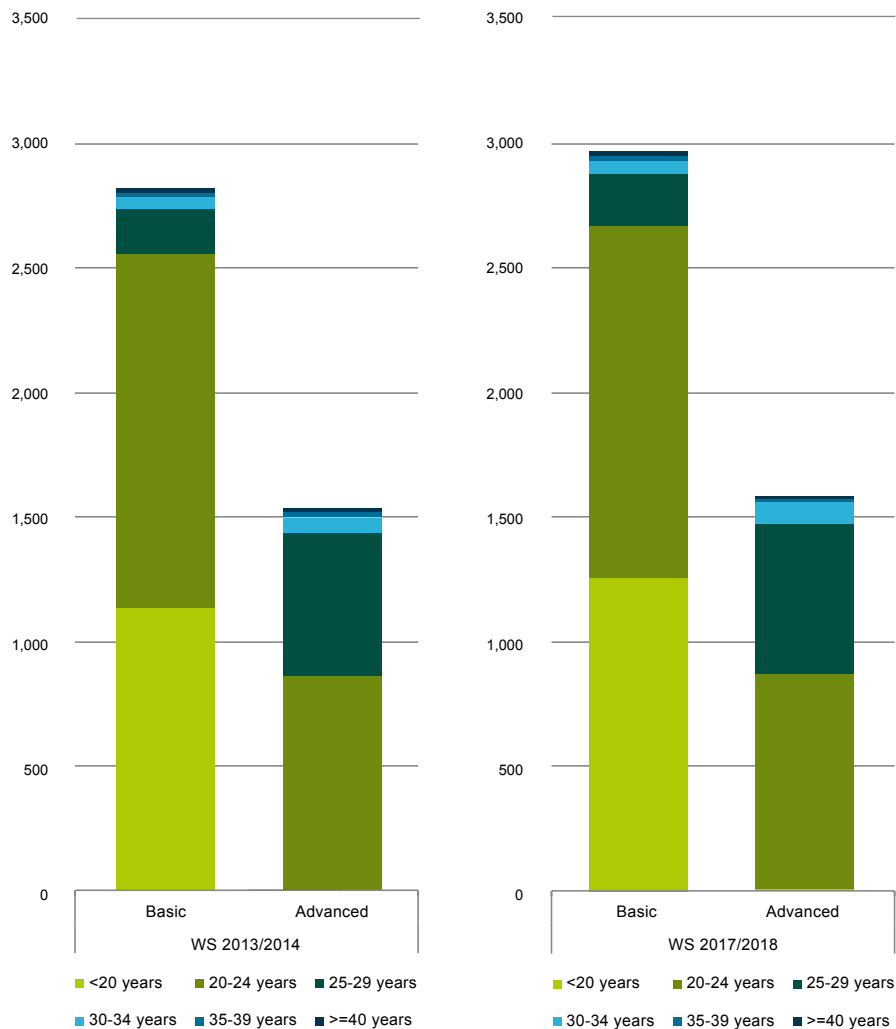
| | Faculty 1 | Faculty 2 | Faculty 3 | Faculty 4 | Faculty 5 | Faculty 6 | Total |
|------------------------|-----------|-----------|-----------|-----------|-----------|-----------|--------|
| Students in the 1st FS | 1,031 | 809 | 997 | 1,359 | 651 | 904 | 5,751 |
| Percent | 17.9% | 14.1% | 17.3% | 23.6% | 11.3% | 15.7% | 100.0% |

Development of students in the 1st study semester by faculty per academic year



For figures, see page 10

Age of students in the 1st study semester by study programmes in the WS 2013/2014 and WS 2017/2018



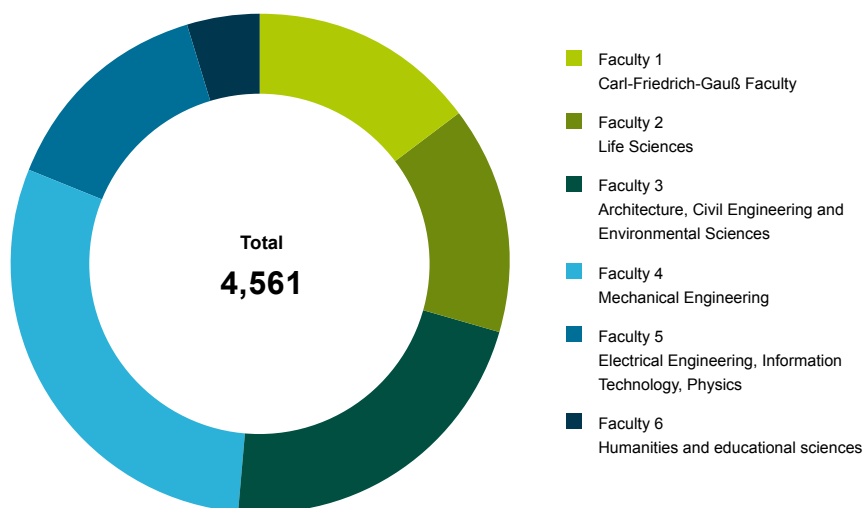
Basic study programmes

| | Age | <20 | 20-24 | 25-29 | 30-34 | 35-39 | >=40 | Total |
|--------------|----------|-------|-------|-------|-------|-------|------|-------|
| WS 2013/2014 | Students | 1,136 | 1,422 | 180 | 51 | 14 | 20 | 2,823 |
| | Percent | 40.2% | 50.4% | 6.4% | 1.8% | 0.5% | 0.7% | |
| WS 2017/2018 | Students | 1,263 | 1,415 | 210 | 52 | 19 | 19 | 2,978 |
| | Percent | 42.4% | 47.5% | 7.1% | 1.7% | 0.6% | 0.6% | |

Advanced study programmes

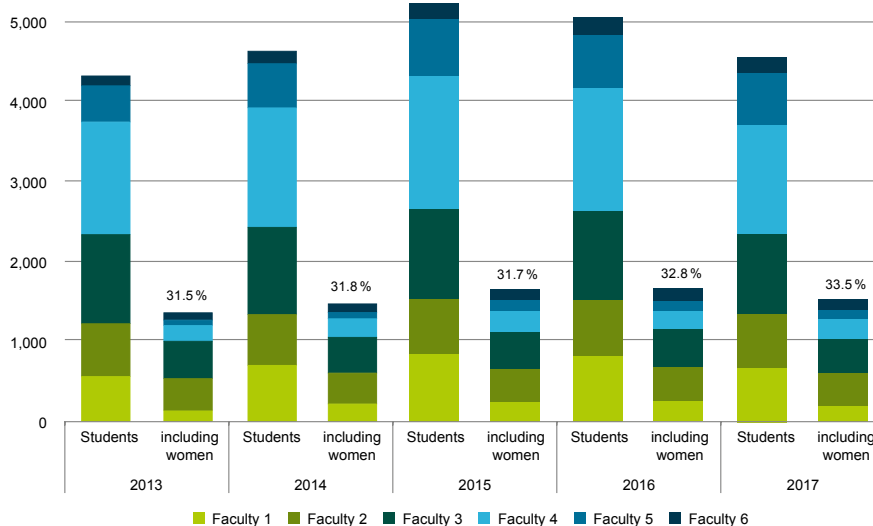
| | Age | <20 | 20-24 | 25-29 | 30-34 | 35-39 | >=40 | Total |
|--------------|----------|------|-------|-------|-------|-------|------|-------|
| WS 2013/2014 | Students | 0 | 861 | 574 | 63 | 20 | 19 | 1,537 |
| | Percent | 0.0% | 56.0% | 37.3% | 4.1% | 1.3% | 1.2% | |
| WS 2017/2018 | Students | 1 | 874 | 604 | 87 | 13 | 13 | 1,592 |
| | Percent | 0.0% | 54.9% | 37.9% | 5.5% | 0.8% | 0.8% | |

STEM-students in the 1st study semester by faculty in the academic year 2017



For figures, see page 9

Development of STEM-students in the 1st study semester by faculty per academic year



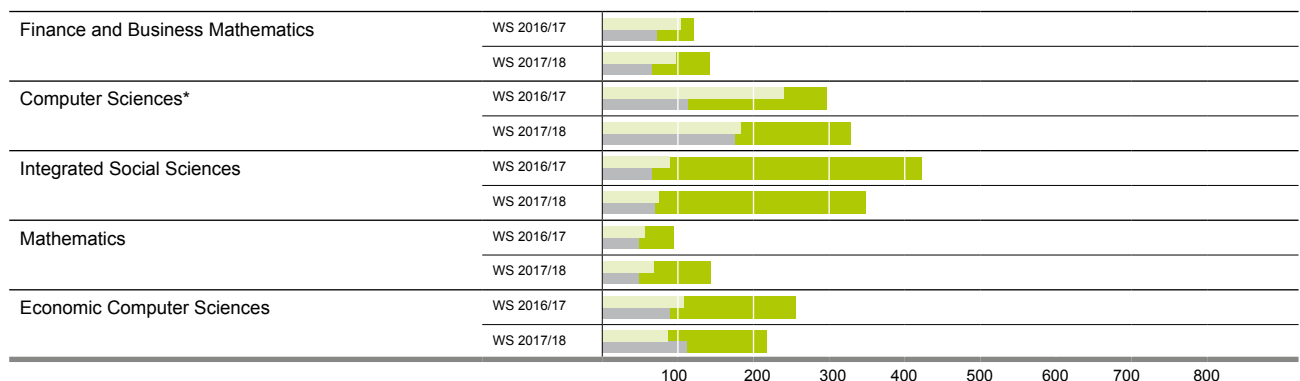
For figures, see page 10

1.3 Number of applications, student places and first-semester students

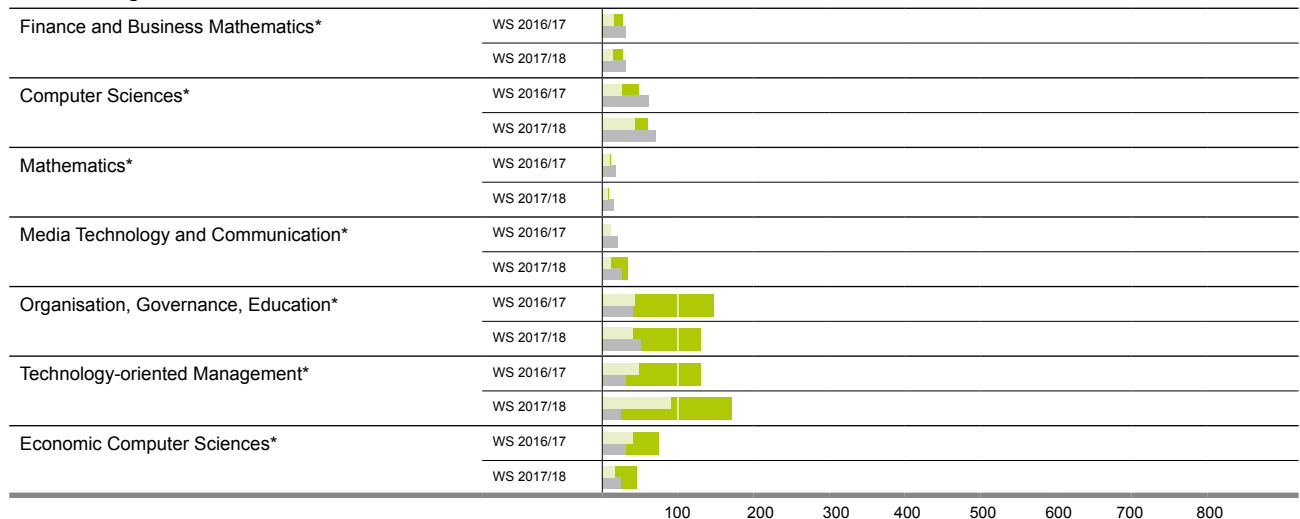
Faculty 1 | Carl-Friedrich-Gauß Faculty

Applications First-semester students Student places

Bachelor's Degree



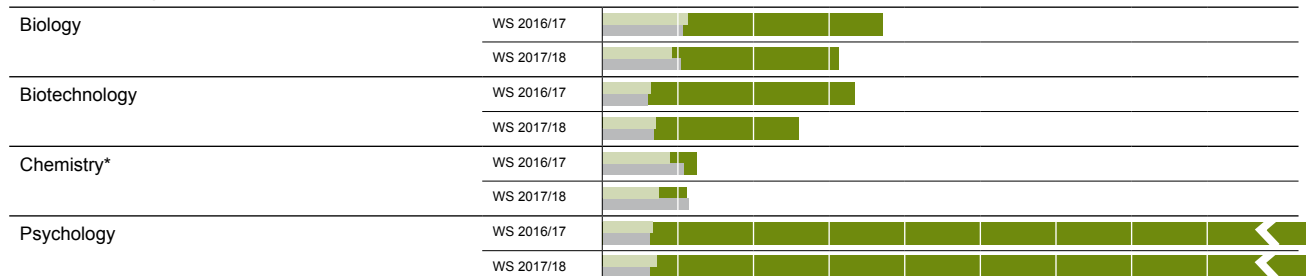
Master's Degree



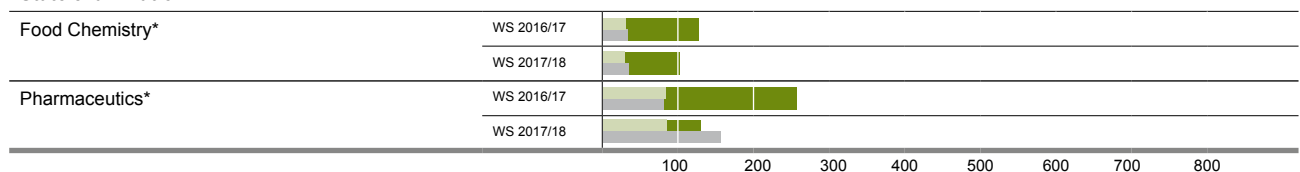
Faculty 2 | Life Sciences

Applications First-semester students Student places

Bachelor's Degree



State examination

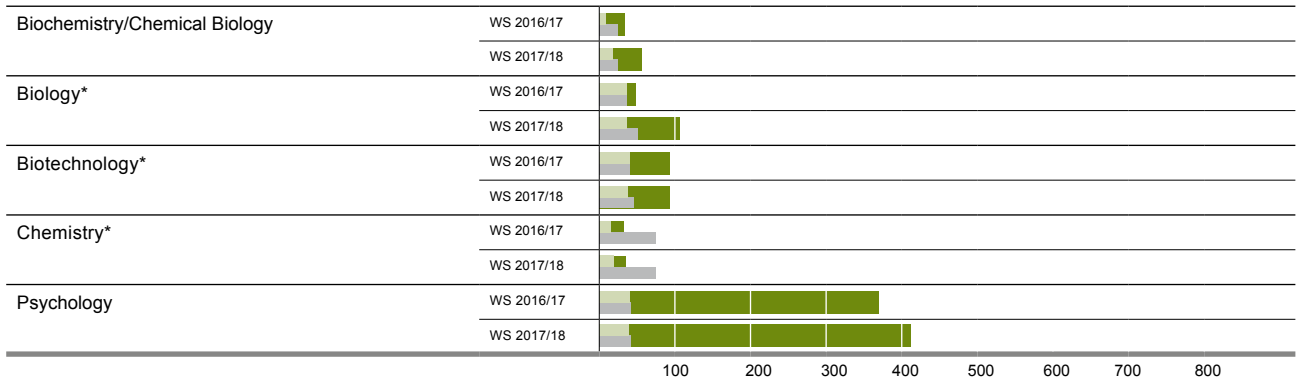


* Courses of study admit in the winter and summer semester

Faculty 2 Life Sciences

Applications First-semester students Student places

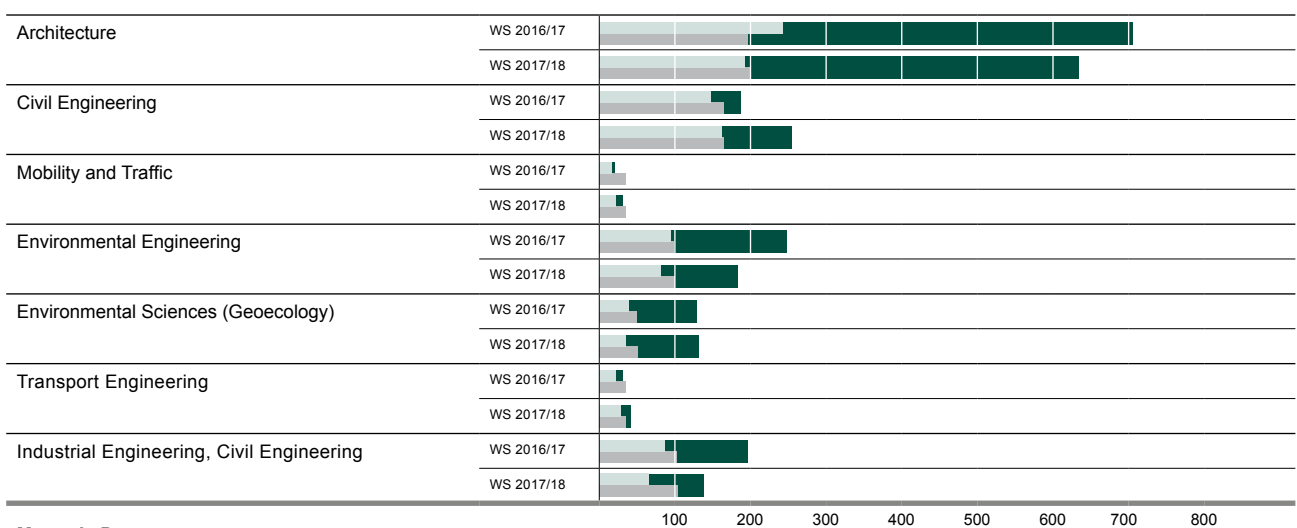
Master's Degree



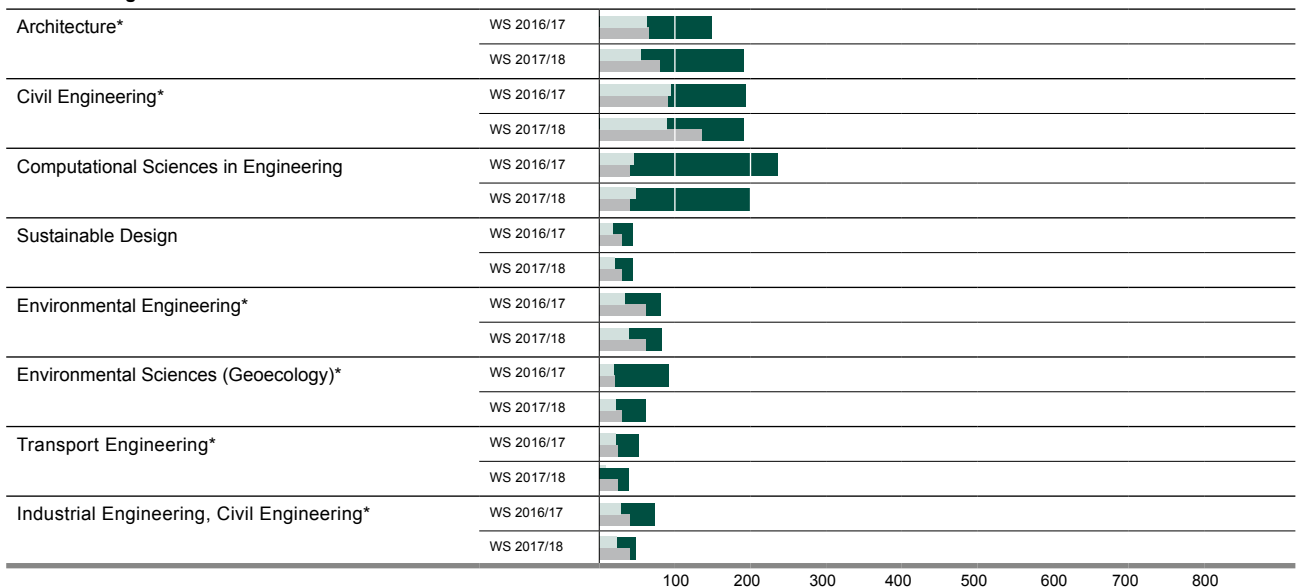
Faculty 3 | Architecture, Civil Engineering a. Environmental Sciences

Applications First-semester students Student places

Bachelor's Degree



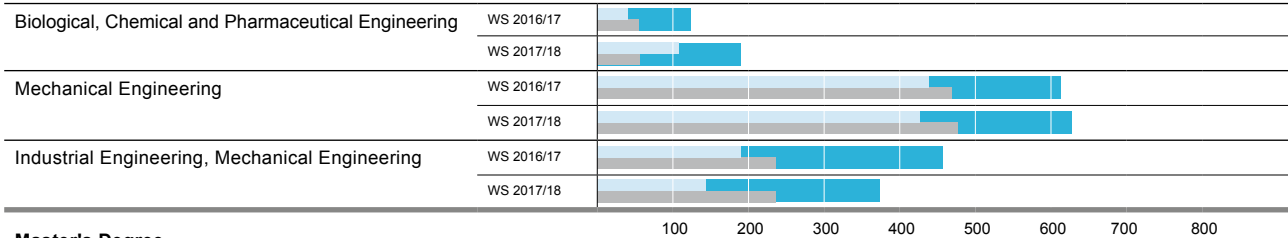
Master's Degree



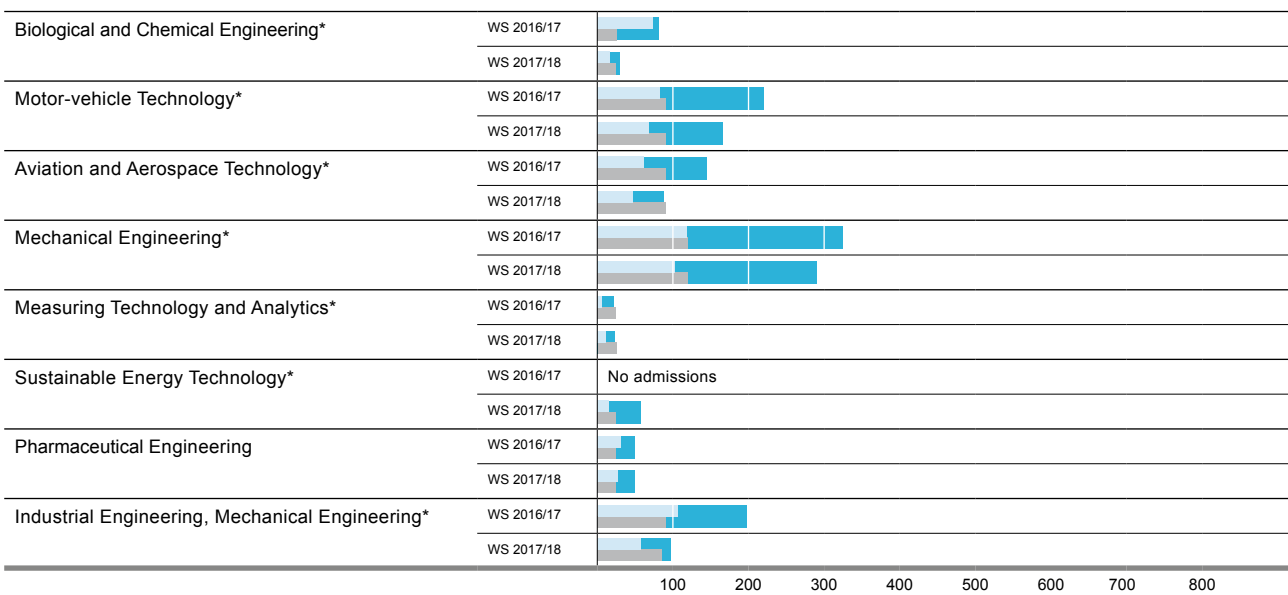
Faculty 4 | Mechanical Engineering

Applications First-semester students Student places

Bachelor's Degree



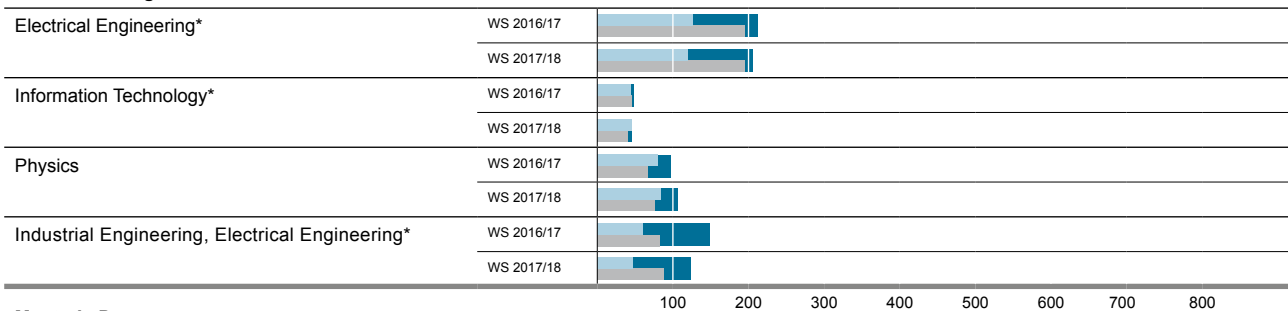
Master's Degree



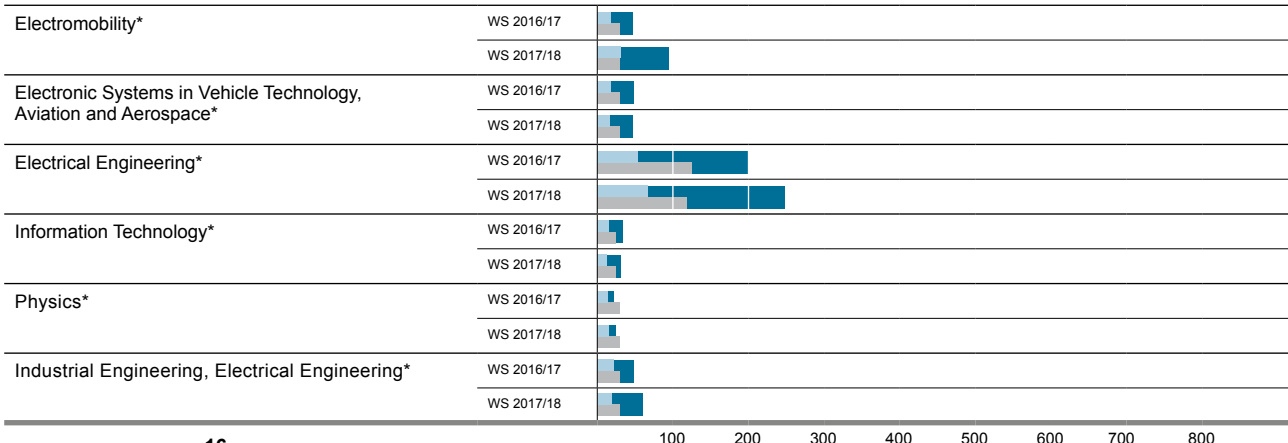
Faculty 5 | Electrical Engineering, Information Technology, Physics

Applications First-semester students Student places

Bachelor's Degree



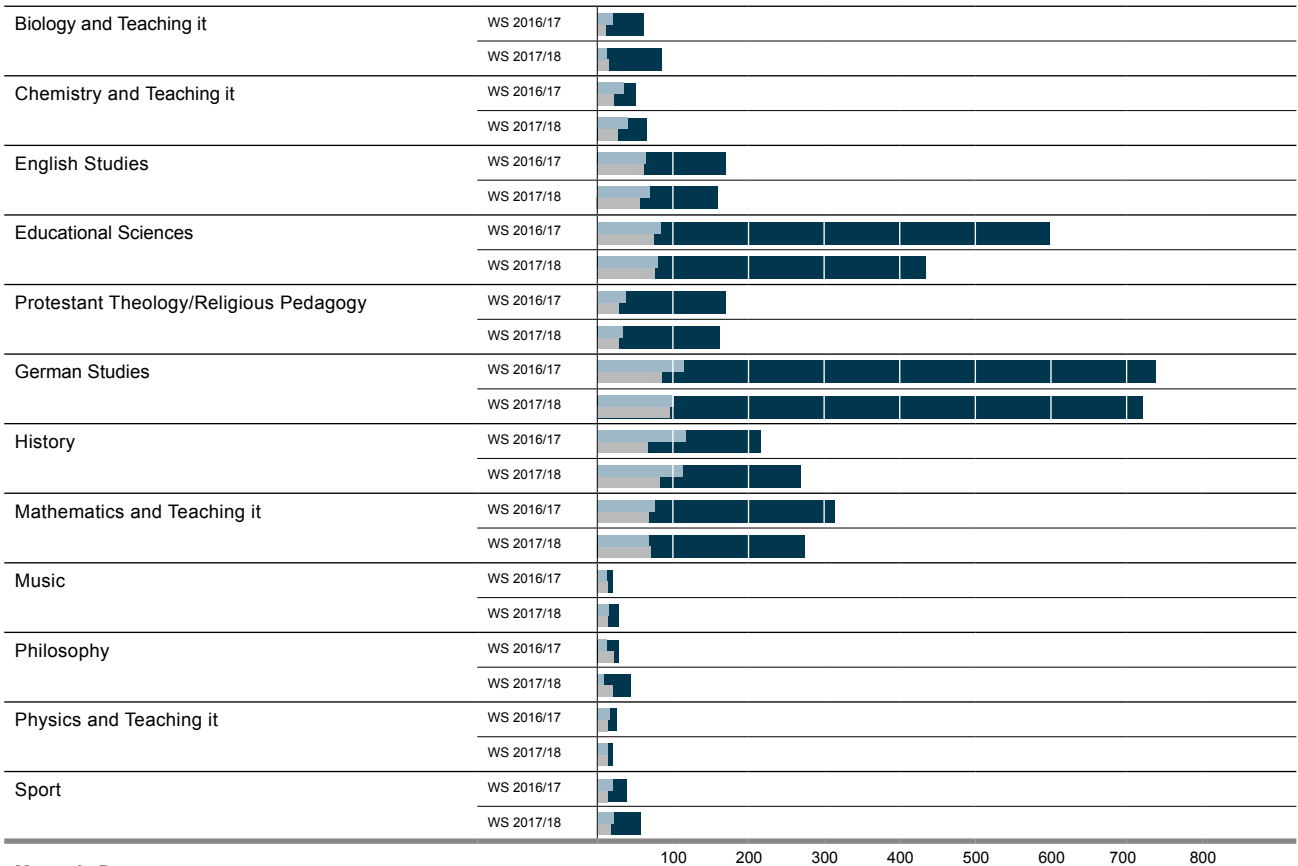
Master's Degree



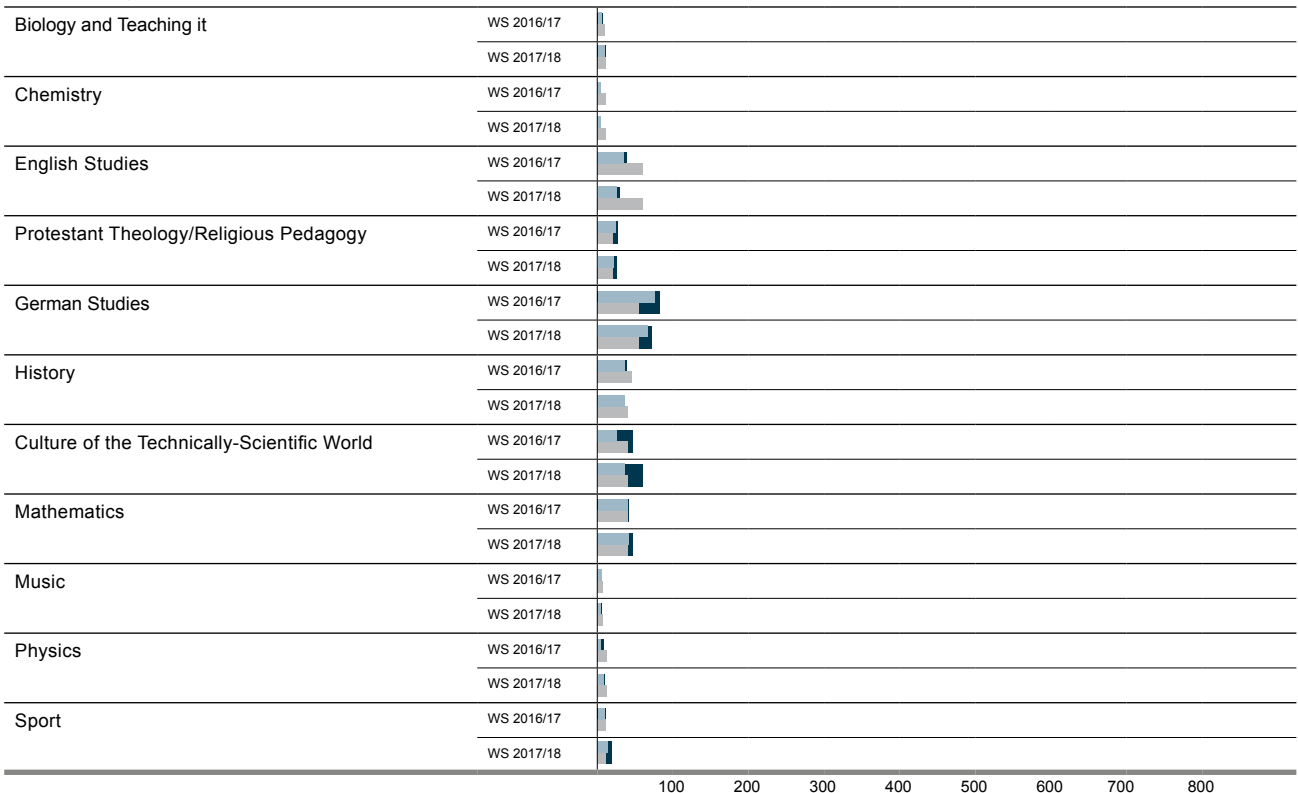
Faculty 6 | Humanities and Educational Sciences

Applications First-semester students Student places

Bachelor's Degree

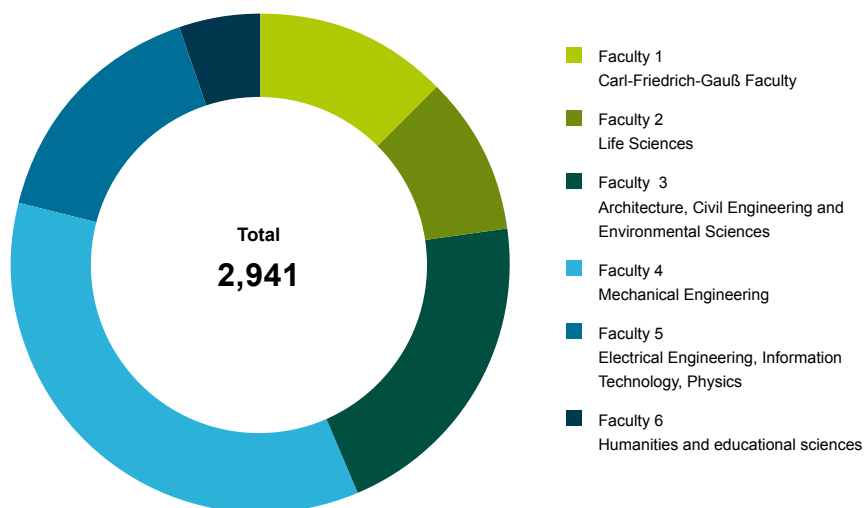


Master's Degree



1.4 International students

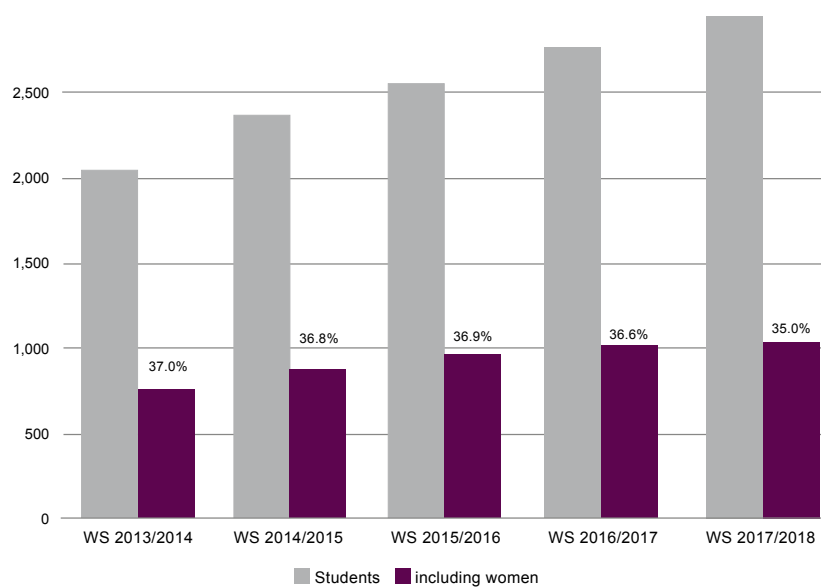
International students* in the winter semester 2017/2018



For figures, see page 19

*International students are students with foreign nationalities

Development of international students



| | WS 2013/2014 | WS 2014/2015 | WS 2015/2016 | WS 2016/2017 | WS 2017/2018 |
|------------------------|--------------|--------------|--------------|--------------|--------------|
| International Students | 2,034 | 2,356 | 2,597 | 2,771 | 2,941 |
| including women | 753 | 867 | 959 | 1,015 | 1,030 |
| Percent | 37.0% | 36.8% | 36.9% | 36.6% | 35.0% |

International students in the winter semester 2013/2014 and 2017/2018

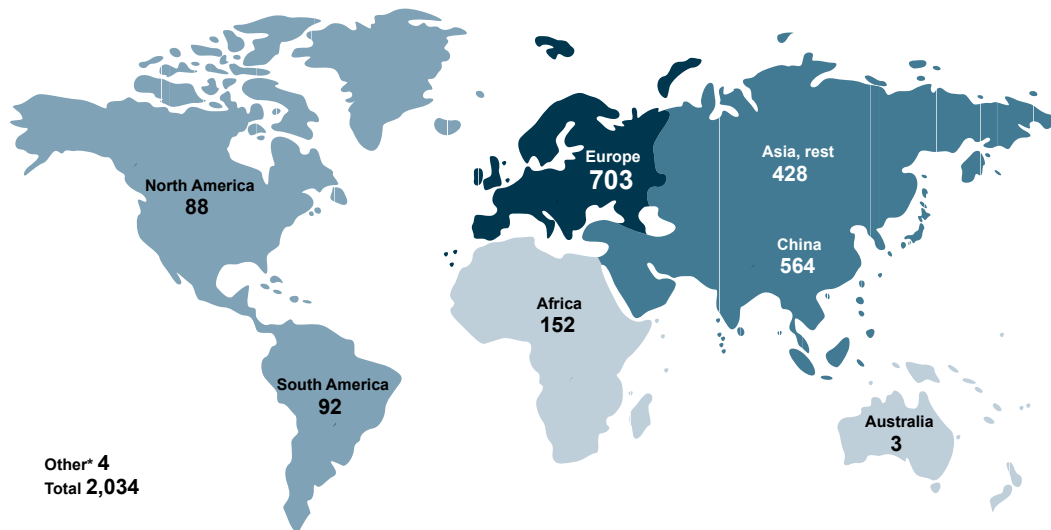
| WS 2013/2014 | | | | | | | |
|------------------------------------|-----------|-----------|-----------|-----------|-----------|-----------|--------|
| | Faculty 1 | Faculty 2 | Faculty 3 | Faculty 4 | Faculty 5 | Faculty 6 | Total |
| Students, total | 2,618 | 2,881 | 3,404 | 4,692 | 1,531 | 2,069 | 17,195 |
| International students | 248 | 274 | 483 | 674 | 267 | 88 | 2,034 |
| Percent* | 9.5% | 9.5% | 14.2% | 14.4% | 17.4% | 4.3% | 11.8% |
| Woman among total students | 936 | 1,883 | 1,352 | 575 | 208 | 1,492 | 6,446 |
| Women among international students | 134 | 170 | 185 | 129 | 67 | 68 | 753 |
| Percent* | 14.3% | 9.0% | 13.7% | 22.4% | 32.2% | 4.6% | 11.7% |

*of the respective total number of students

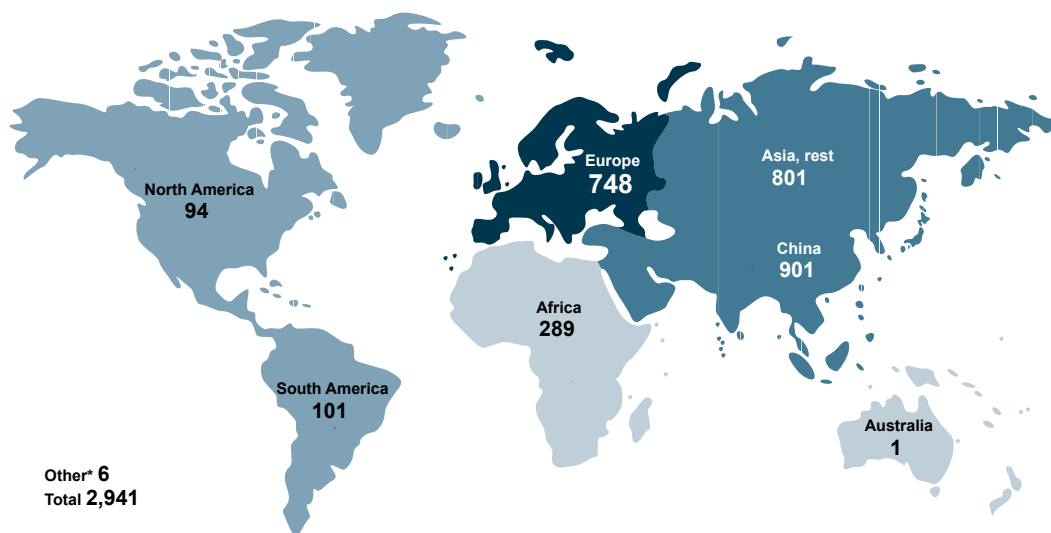
| WS 2017/2018 | | | | | | | |
|------------------------------------|-----------|-----------|-----------|-----------|-----------|-----------|--------|
| | Faculty 1 | Faculty 2 | Faculty 3 | Faculty 4 | Faculty 5 | Faculty 6 | Total |
| Students, total | 3,341 | 2,904 | 3,785 | 5,348 | 1,991 | 2,747 | 20,116 |
| International students | 375 | 302 | 608 | 1,040 | 470 | 146 | 2,941 |
| Percent* | 11.2% | 10.5% | 16.1% | 19.4% | 23.6% | 5.3% | 14.6% |
| Woman among total students | 1,215 | 1,881 | 1,526 | 813 | 312 | 1,943 | 7,690 |
| Women among international students | 163 | 195 | 211 | 230 | 112 | 119 | 1,030 |
| Percent* | 13.4% | 10.4% | 13.8% | 28.3% | 35.9% | 6.1% | 13.4% |

*of the respective total number of students

Origin of the international students in the winter semester 2013/2014



Origin of the international students in the winter semester 2017/2018



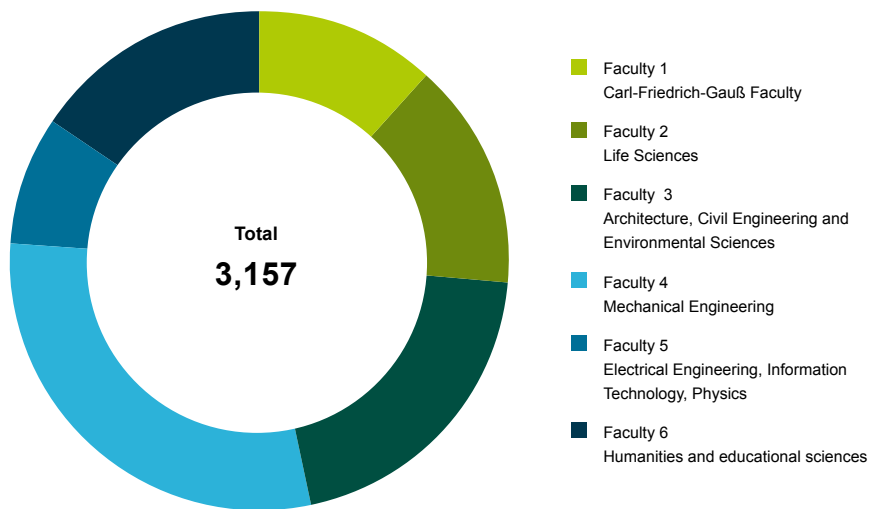
*without nationality, undetermined

© http://de.freepik.com/vektoren-kostenlos/welt-geolocation-reise-illustration_714016.htm

2 Graduates

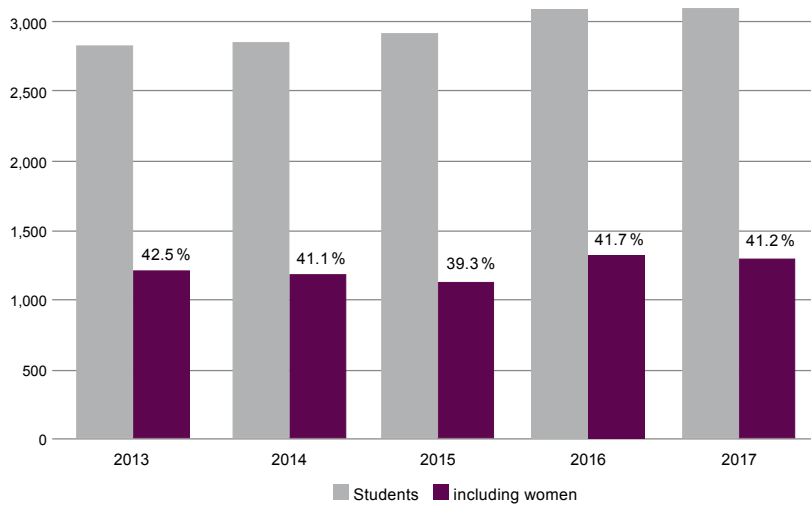
2.1 Graduates, total

Graduates in the examination year 2017



Graduates including state examination, no doctorates,
Examination year: WS + SoSe (e.g. examination year 2017: WS 2016/2017 + SoSe 2017)
For figures, see page 22

Development of graduates



Graduates including state examination, without doctorates

Development of graduates by faculty

| 2013 | | | | | | | |
|----------------------|-----------|-----------|-----------|-----------|-----------|-----------|-------|
| | Faculty 1 | Faculty 2 | Faculty 3 | Faculty 4 | Faculty 5 | Faculty 6 | Total |
| Graduates | 368 | 479 | 523 | 772 | 227 | 483 | 2,852 |
| including women | 123 | 330 | 229 | 119 | 27 | 383 | 1,211 |
| including STEM | 265 | 366 | 523 | 772 | 227 | 93 | 2,246 |
| including STEM women | 60 | 232 | 229 | 119 | 27 | 70 | 737 |

| 2014 | | | | | | | |
|----------------------|-----------|-----------|-----------|-----------|-----------|-----------|-------|
| | Faculty 1 | Faculty 2 | Faculty 3 | Faculty 4 | Faculty 5 | Faculty 6 | Total |
| Graduates | 343 | 483 | 577 | 845 | 200 | 430 | 2,878 |
| including women | 128 | 347 | 245 | 108 | 27 | 328 | 1,183 |
| including STEM | 273 | 366 | 577 | 845 | 200 | 89 | 2,350 |
| including STEM women | 83 | 245 | 245 | 108 | 27 | 63 | 771 |

| 2015 | | | | | | | |
|----------------------|-----------|-----------|-----------|-----------|-----------|-----------|-------|
| | Faculty 1 | Faculty 2 | Faculty 3 | Faculty 4 | Faculty 5 | Faculty 6 | Total |
| Graduates | 380 | 436 | 584 | 921 | 239 | 370 | 2,930 |
| including women | 157 | 300 | 257 | 113 | 31 | 293 | 1,151 |
| including STEM | 239 | 323 | 584 | 921 | 239 | 76 | 2,383 |
| including STEM women | 64 | 209 | 257 | 113 | 31 | 55 | 729 |

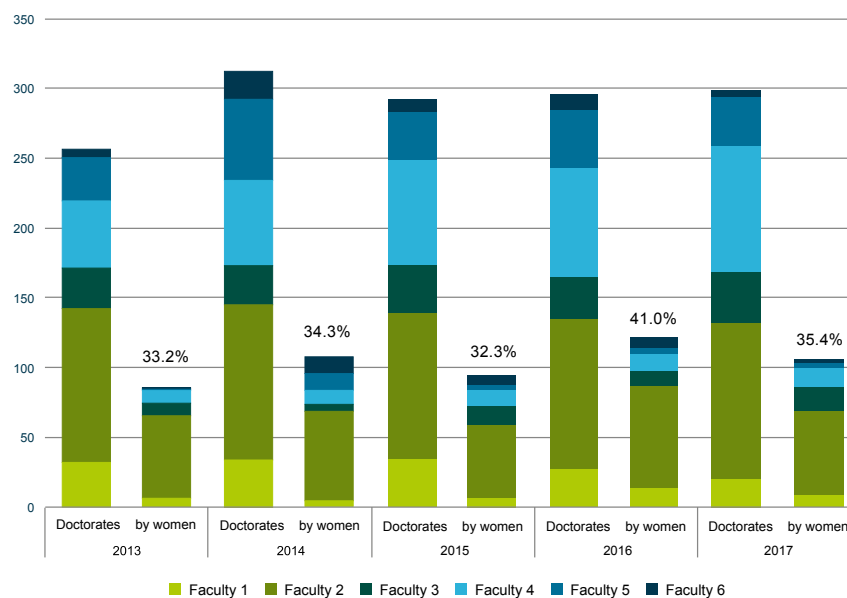
| 2016 | | | | | | | |
|----------------------|-----------|-----------|-----------|-----------|-----------|-----------|-------|
| | Faculty 1 | Faculty 2 | Faculty 3 | Faculty 4 | Faculty 5 | Faculty 6 | Total |
| Graduates | 335 | 569 | 646 | 902 | 254 | 424 | 3,131 |
| including women | 132 | 404 | 287 | 111 | 34 | 336 | 1,304 |
| including STEM | 210 | 460 | 646 | 902 | 254 | 90 | 2,562 |
| including STEM women | 54 | 303 | 287 | 111 | 34 | 68 | 857 |

| 2017 | | | | | | | |
|----------------------|-----------|-----------|-----------|-----------|-----------|-----------|-------|
| | Faculty 1 | Faculty 2 | Faculty 3 | Faculty 4 | Faculty 5 | Faculty 6 | Total |
| Graduates | 376 | 462 | 636 | 932 | 262 | 489 | 3,157 |
| including women | 162 | 304 | 261 | 141 | 44 | 390 | 1,302 |
| including STEM | 86 | 375 | 636 | 932 | 262 | 122 | 2,413 |
| including STEM women | 30 | 234 | 261 | 141 | 44 | 67 | 777 |

Graduates including state examination, without doctorates

2.2 Doctorates

Development of number of acquired doctorates



| | | Faculty 1 | Faculty 2 | Faculty 3 | Faculty 4 | Faculty 5 | Faculty 6 | Total |
|------|------------|-----------|-----------|-----------|-----------|-----------|-----------|-------|
| 2013 | Doctorates | 32 | 110 | 29 | 48 | 31 | 6 | 256 |
| | by women | 6 | 59 | 9 | 9 | 1 | 1 | 85 |
| 2014 | Doctorates | 34 | 111 | 28 | 61 | 58 | 20 | 312 |
| | by women | 4 | 64 | 5 | 10 | 12 | 12 | 107 |
| 2015 | Doctorates | 34 | 105 | 35 | 75 | 35 | 10 | 294 |
| | by women | 7 | 52 | 13 | 12 | 4 | 7 | 95 |
| 2016 | Doctorates | 27 | 107 | 30 | 78 | 42 | 11 | 295 |
| | by women | 13 | 73 | 11 | 12 | 4 | 8 | 121 |
| 2017 | Doctorates | 20 | 111 | 36 | 90 | 35 | 5 | 297 |
| | by women | 8 | 59 | 17 | 14 | 3 | 3 | 104 |

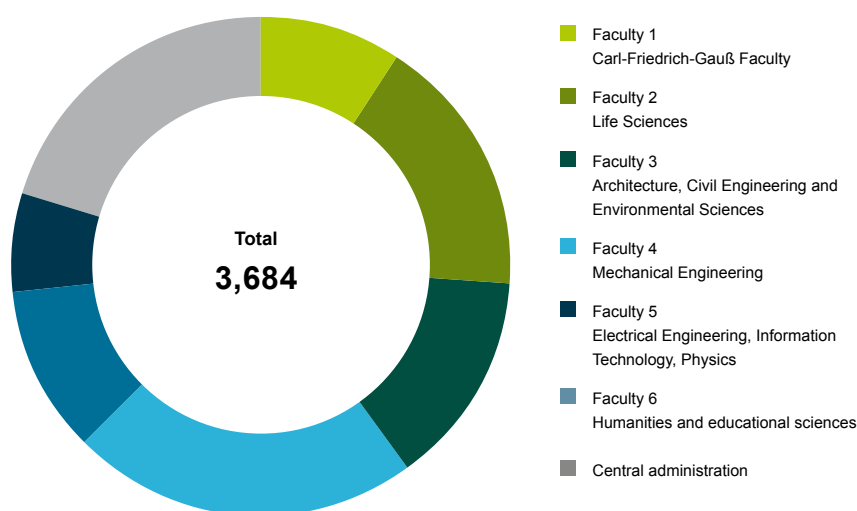
2.3 Postdoctoral degrees

Development of number of acquired postdoctoral degrees

| | 2013 | 2014 | 2015 | 2016 | 2017 |
|----------------------|------|------|------|------|------|
| Postdoctoral degrees | 9 | 3 | 5 | 5 | 8 |
| by women | 2 | 2 | 1 | 1 | 2 |

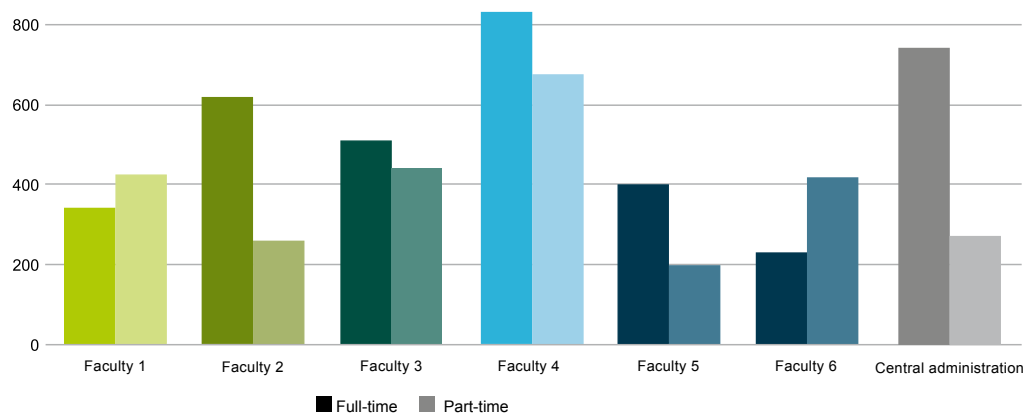
3 Staff

Full-time staff members – head count 2017



Source: University statistics 2017; State Statistical Office for Lower Saxony (LSN)
as of: 01 December 2017

Full- and part-time staff members – head count 2017



For figures, see page 25

Staff members 2017

Sorted by full- and part-time – head count

| Staff members | | Women | Percent | Men | Percent | Total |
|--------------------------------|--|-------|---------|-------|---------|-------|
| Full-time | Trainees | 35 | 34.0% | 68 | 66.0% | 103 |
| | Staff members in technology and administration | 824 | 60.6% | 535 | 39.4% | 1,359 |
| | Professors | 48 | 19.9% | 193 | 80.1% | 241 |
| | Scientific staff | 610 | 30.8% | 1,371 | 69.2% | 1,981 |
| Full-time staff members, total | | 1,517 | 41.2% | 2,167 | 58.8% | 3,684 |
| Part-time | Adjunct lecturers (for remuneration) | 173 | 42.3% | 236 | 57.7% | 409 |
| | Student assistants | 763 | 35.3% | 1,396 | 64.7% | 2,159 |
| | Research assistants | 57 | 47.5% | 63 | 52.5% | 120 |
| Part-time, total | | 993 | 36.9% | 1,695 | 63.1% | 2,688 |
| Total | | 2,510 | 39.4% | 3,862 | 60.6% | 6,372 |

Source: University statistics 2017; LSN
as of: 01 December 2017

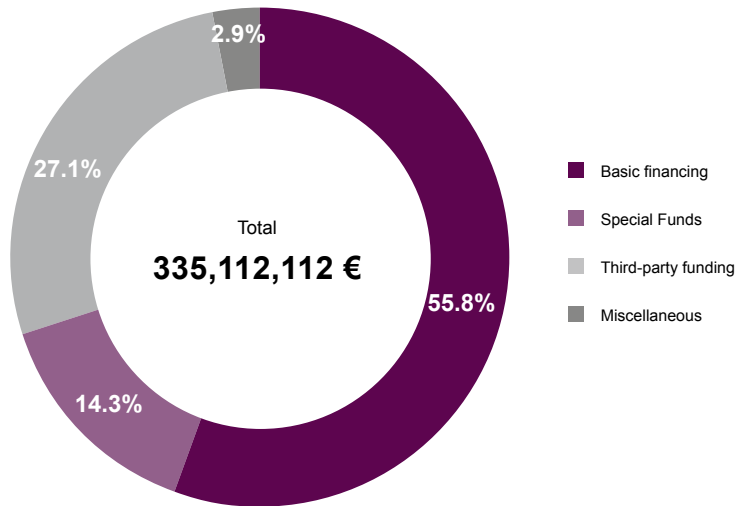
Staff members 2017 by faculty and central administration

| Staff members | | Faculty 1 | Faculty 2 | Faculty 3 | Faculty 4 | Faculty 5 | Faculty 6 | Central Administration | Total |
|------------------|--|-----------|-----------|-----------|-----------|-----------|-----------|------------------------|-------|
| Full-time | Trainees | 2 | 8 | 19 | 23 | 22 | 2 | 27 | 103 |
| | Staff members in technology and administration | 66 | 183 | 132 | 191 | 100 | 47 | 640 | 1,359 |
| | Professors | 46 | 54 | 43 | 35 | 31 | 32 | 0 | 241 |
| | Scientific staff | 230 | 376 | 318 | 585 | 247 | 152 | 73 | 1,981 |
| Full-time, total | | 344 | 621 | 512 | 834 | 400 | 233 | 740 | 3,684 |
| Part-time | Adjunct lecturers (for remuneration) | 67 | 21 | 62 | 22 | 6 | 168 | 63 | 409 |
| | Student assistants | 342 | 191 | 367 | 637 | 186 | 230 | 206 | 2,159 |
| | Research assistants | 16 | 48 | 13 | 16 | 8 | 14 | 5 | 120 |
| Part-time, total | | 425 | 260 | 442 | 675 | 200 | 412 | 274 | 2,688 |
| Total | | 769 | 881 | 954 | 1,509 | 600 | 645 | 1,014 | 6,372 |

Source: University statistics 2017; LSN
as of: 01 December 2017

4 Finances

Finance volume in 2017



Source: Profit and loss statement (PaL), see page 27

Development of income by origin of funds for the years 2013 to 2017

| | 2013 | 2014 | 2015 | 2016 | 2017 |
|--|--------------------|--------------------|--------------------|--------------------|--------------------|
| Continuous grant from the state of Lower Saxony | 169,700,350 | 177,639,749 | 184,501,536 | 183,229,992 | 186,897,924 |
| Special funds of the state | 19,979,307 | 35,735,497 | 52,584,080 | 43,222,523 | 47,775,060 |
| <i>including funds from Hochschulpakt 2020</i> | 6,588,427 | 11,967,464 | 11,564,701 | 14,722,223 | 14,191,488 |
| <i>including government funding for educational quality</i> | 0 | 1,794,000 | 9,764,000 | 12,637,676 | 13,422,759 |
| <i>including other special funds</i> | 13,390,880 | 21,974,033 | 31,255,379 | 15,862,624 | 20,160,814 |
| Study fees | 12,349,569 | 6,019,000 | 0 | 0 | 0 |
| Third-party funding | 76,198,874 | 80,086,002 | 80,581,009 | 86,503,447 | 90,758,056 |
| <i>including grant research</i> | 55,400,006 | 57,440,327 | 57,360,627 | 62,766,879 | 67,837,025 |
| <i>including contract research</i> | 20,798,868 | 22,645,675 | 23,220,382 | 23,736,569 | 22,921,031 |
| Miscellaneous | 18,892,969 | 14,668,619 | 10,637,622 | 10,552,855 | 9,681,071 |
| <i>including other operating income</i> | 16,582,995 | 12,989,762 | 13,341,025 | 12,655,468 | 10,741,744 |
| <i>including change in inventory of semi-finished products</i> | 2,309,973 | 1,678,857 | -2,703,403 | -2,102,613 | -1,060,673 |
| Total | 297,121,069 | 314,148,867 | 328,304,247 | 323,508,817 | 335,112,112 |

Source: PaL, see page 27

4.1 Profit and loss statement (PaL)

01 January to 31 December 2017 (as of: 19 September 2018)

| | 31 Dec 2017 | | 31 Dec 2016 | |
|--|----------------|-----------------------|----------------|-----------------------|
| | EUR | EUR | EUR | EUR |
| 1. Income from assignments and grant for current expenses | | | | |
| a) from the state of Lower Saxony from subject chapters funds | 184,997,924.47 | | 181,292,991.89 | |
| b) from the state of Lower Saxony from special funds | 33,165,196.29 | | 32,838,189.49 | |
| c) from other grant providers | 62,955,344.30 | 281,118,465.06 | 56,693,218.90 | 270,824,400.28 |
| 2. Income from assignments and subsidies for financing investments | | | | |
| a) from the state of Lower Saxony from subject chapters funds | 1,900,000.00 | | 1,937,000.00 | |
| b) from the state of Lower Saxony from special funds | 14,609,864.09 | | 10,384,333.01 | |
| c) from other grant providers | 4,881,680.47 | 21,391,544.56 | 6,073,659.87 | 18,394,992.88 |
| 3. Income from study fees and long-term study fees | | 805,000.00 | | 806,000.00 |
| 4. Turnover revenues | | | | |
| a) Income from third-party orders | 22,921,031.26 | | 23,736,568.55 | |
| b) Income from continuing education | 873,064.93 | | 1,182,421.92 | |
| c) Other income | 5,068,146.51 | 28,862,242.70 | 5,029,051.42 | 29,948,041.89 |
| 5. Reduction of the inventory of semi-finished products | | -1,060,673.07 | | -2,102,613.28 |
| 6. Other operational income | | | | |
| a) Income from scholarships | 594,909.58 | | 1,525,960.00 | |
| b) Income from donations and sponsoring | 1,241,780.72 | | 821,122.96 | |
| c) Other operating income | 27,207,908.48 | 29,044,598.78 | 29,923,808.94 | 29,270,891.90 |
| – including income from dissolution of the special item for investment grants – EUR 25,049,066.34 (PY EUR 23,632,896.77) – | | | | |
| – including income from the dissolution of the special item for study fees EUR 272,958.23 (PY EUR 1,302,259.82) – | | | | |
| | | 360,161,178.03 | | 347,141,713.67 |
| 7. Material expenses/expenses for services received | | | | |
| a) Expenses for raw, auxiliary and operating materials and other materials | 8,174,160.31 | | 8,089,888.82 | |
| b) Expenses for services received | 5,143,137.41 | 13,317,297.72 | 5,238,414.32 | 13,328,303.14 |
| 8. Funding for staff | | | | |
| a) Compensation, salaries and remuneration packages | 170,825,992.66 | | 160,159,378.94 | |
| b) Social security contributions and expenses for old-age pensions and support | 46,441,209.39 | 217,267,202.05 | 43,798,830.21 | 203,958,209.15 |
| – including for old-age pensions EUR 17,061,938.63 (PY EUR 16,075,389.54) – | | | | |
| 9. Depreciations for intangible assets of the investments and fixed assets | | 24,669,366.34 | | 23,265,408.17 |
| 10. Other operating expenses | | | | |
| a) Management of the buildings and facilities | 12,732,644.15 | | 13,251,444.62 | |
| b) Energy, water, sewage and disposal | 10,091,827.85 | | 10,689,479.15 | |
| c) Other personnel expenses and teaching assignments | 6,814,872.46 | | 6,541,688.72 | |
| d) Use of rights and services | 27,780,091.25 | | 26,941,866.11 | |
| e) Business needs and communication | 1,618,487.78 | | 1,617,838.93 | |
| f) Student support | 3,168,007.77 | | 3,153,241.51 | |
| g) Remaining other expenses | 36,376,953.75 | 98,582,885.01 | 36,018,522.44 | 98,214,081.48 |
| – including expenses from addition to the special item for investment grants EUR 33,363,823.39 (PY EUR 30,943,691.02) – | | | | |
| 11. Other interests and income | | 90,412.79 | | 71,879.41 |
| – including from investment of study fees EUR 31.10 (PY EUR 1,285.65) – | | | | |
| 12. Interests and similar expenses | | 3,368.98 | | 3,863.40 |
| | | 353,749,707.31 | | 338,697,985.93 |
| | | 6,411,470.72 | | 8,443,727.74 |
| 13. Taxes on income and revenue | | 402,203.30 | | 252,126.70 |
| 14. Result after taxes | | 6,009,267.42 | | 8,191,601.04 |
| 15. Other taxes | | 28,300.41 | | 31,003.04 |
| 16. Net surplus | | 5,980,967.01 | | 8,160,598.00 |
| 17. Profit carryforward | | 16,417,049.70 | | 15,881,193.49 |
| 18. Withdrawal from profit provisions | | | | |
| From the provision in accordance with § 49 (1) no. 2 NHG | 7,225,570.85 | | 5,590,852.44 | |
| From the special provisions for the non-economic area | 1,436,791.48 | | 3,135,152.04 | |
| From special provisions for the economic area | 8,788,681.08 | 17,451,043.41 | 6,900,443.20 | 15,626,447.68 |
| 19. Addition to retained earnings | | | | |
| In the provision in accordance with § 49 (1) no. 2 NHG | 16,417,049.70 | | 15,881,193.49 | |
| In the special provisions for the non-economic area | 1,004,612.72 | | 1,530,146.17 | |
| In special provisions for the economic area | 6,381,147.28 | 23,802,809.70 | 5,194,387.81 | 22,605,727.47 |
| 20. Change to the net item | | 583,421.00 | | -645,462.00 |
| 21. Net profit | | 16,629,671.42 | | 16,417,049.70 |

4.2 Balance sheet as of 31 December 2017

As of 19 September 2018

| Assets | 31 Dec 2017 | | 31 Dec 2016 | |
|---|----------------|-----------------------|----------------|-----------------------|
| | EUR | EUR | EUR | EUR |
| A. Fixed assets | | | | |
| I. Intangible assets | | | | |
| 1. Usage rights acquired for a fee (software) | 1,927,833.00 | | 2,037,292.00 | |
| 2. Downpayments made | 458,282.58 | 2,386,115.58 | 274,423.52 | 2,311,715.52 |
| II. Property, plant and equipment | | | | |
| 1. Land, leasehold rights and buildings, including building on third-party land | 36,676,810.00 | | 35,841,621.00 | |
| 2. Technical plants and machinery | 5,304,280.00 | | 5,754,160.00 | |
| 3. Other plants, operating and business equipment | 120,798,899.00 | | 117,473,585.00 | |
| 4. Downpayments made and plants under construction | 24,603,542.44 | 187,383,531.44 | 20,073,808.45 | 179,143,174.45 |
| III. Financial assets | | | | |
| Cooperative shares | | 5,000.00 | | 5,000.00 |
| | | 189,774,647.02 | | 181,459,889.97 |
| B. Current assets | | | | |
| I. Inventories | | | | |
| 1. Auxiliary and operating equipment | 1,842,800.00 | | 1,842,000.00 | |
| 2. Unfinished products | 11,369,758.87 | 13,212,558.87 | 12,025,404.73 | 14,310,100.27 |
| II. Receivables and other assets | | | | |
| 1. Trade receivables | 8,688,538.52 | | 6,069,656.46 | |
| 2. Receivables from the state of Lower Saxony | 3,919,122.08 | | 4,017,587.61 | |
| 3. Receivables from other grant providers | 7,416,046.86 | | 5,817,623.33 | |
| 4. Other assets | 1,464,417.76 | 21,488,125.22 | 2,044,407.36 | 17,949,274.76 |
| III. Cash, credit in bank accounts | | 146,805,706.54 | | 134,014,402.51 |
| – including in the suspense account of the Niedersächsischen Landeshauptkasse EUR 123,789,398.93 (PY EUR 99,314,053.95) – | | | | |
| | | 181,506,447.90 | | 166,273,777.54 |
| C. Accruals and deferrals | | 2,387,447.90 | | 2,777,003.97 |
| | | 373,668,485.55 | | 350,510,671.48 |

| Liabilities | 31 Dec 2017 | | 31 Dec 2016 | |
|--|---------------|-----------------------|---------------|-----------------------|
| | EUR | EUR | EUR | EUR |
| A. Equity | | | | |
| I. Net position | | -9,938,115.00 | | -9,354,694.00 |
| II. Retained earnings | | | | |
| 1. Provision in accordance with § 49 (1) no. 2 NHG – including liabilities from appointment and continuation agreements EUR 16,872,000.00 (PY EUR 15,784,177.81) – | 53,176,526.12 | | 43,985,047.27 | |
| 2. Special provisions, non-economic area | 5,433,265.48 | | 5,865,444.24 | |
| 3. Special provisions, economic area | 14,304,094.19 | 72,913,885.79 | 16,711,627.99 | 66,562,119.50 |
| III. Net profit | | 16,629,671.42 | | 16,417,049.70 |
| | | 79,605,442.21 | | 73,624,475.20 |
| B. Special items for investment grants | | 189,774,647.02 | | 181,459,889.97 |
| C. Special item for study fees | | 346,869.11 | | 619,827.34 |
| D. Provisions | | | | |
| 1. Tax provisions | | 362,350.00 | 225,590.00 | |
| 2. Other provisions | | 12,047,645.00 | 11,448,424.00 | 11,674,014.00 |
| | | 12,409,995.00 | | 193,753,731.31 |
| E. Liabilities | | | | |
| 1. Downpayments received | | 11,515,748.32 | 13,167,730.30 | |
| 2. Trade liabilities | | 6,434,213.09 | 7,287,752.94 | |
| 3. Liabilities towards the state of Lower Saxony | | 59,865,371.59 | 53,273,882.49 | |
| 4. Liabilities towards other grant providers | | 11,496,087.93 | 7,430,892.42 | |
| 5. Other liabilities | | 1,881,768.52 | 1,622,051.90 | 82,782,309.88 |
| – including from taxes EUR 653,670.33 (PY EUR 16,899.70) – | | | | |
| | | 91,193,189.45 | | 82,782,309.88 |
| F. Accruals and deferrals | | 338,342.76 | | 350,155.09 |
| | | 373,668,485.55 | | 350,510,671.48 |

5 Glossary

Academic year

The academic year is defined as summer semester plus the subsequent winter semester (e.g. academic year 2017 = SoSe 2017 and WS 2017/2018).

Advanced study programmes

Advanced study programmes have the goal of acquiring a master's degree or doctorate.

Applications

Applications are only considered that participate in the approval procedure and that meet the formal requirements. The application for admission must be complete for study programmes without restricted admission.

Balance sheet

The balance sheet is the comparison of assets and capital as of 31 December of a year. The assets reflect the specific use of the funds used, the capital (liabilities) reflect the origin of funds (equity and loan capital).

Basic financing (basic equipment)

Amount allocated for the basic equipment of a university within the scope of the budget plan of the state of Lower Saxony. The basic funding results from items 1a and 2a of the PaL.

Basic study programmes

Basic study programmes have the goal of Bachelor's Degree/Double Major Bachelor's Degree, Diploma, Magister or state examination.

Examination year

The examination year is defined as winter semester plus the subsequent summer semester (e.g. examination year 2017 = WS 2016/2017 and SoSe 2017).

Faculty 1: Carl-Friedrich-Gauß Faculty: Departments Computer Sciences, Mathematics, Social Sciences, Economics with 14 study programmes and two partial study programmes.

Faculty 2: Life Sciences: Biosciences, Chemistry, Food Chemistry, Pharmaceutics, Psychology with 16 study programmes.

Faculty 3: Architecture, Civil Engineering and Environmental Sciences with 18 study programmes.

Faculty 4: Mechanical Engineering with eleven study programmes.

Faculty 5: Electrical Engineering, Information Technology, Physics with ten study programmes and two partial study programmes.

Faculty 6: Humanities and Educational Sciences: English, Educational Sciences, Protestant Theology, Teaching Methodology of Natural Sciences (Biology, Chemistry, Physics), German Studies, History, Mathematical Didactics, Music, Philosophy, Sport with six study programmes and 42 partial study programmes.

Finance volume

The finance volume includes the total budget volume of the university. It is defined by items 1 to 6 of the PaL, minus income from dissolution of the special item for investment grants.

Graduates

Graduates are students who passed the final examination. These are the final Bachelor's Degree/Double Major Bachelor's Degree, Diploma, Magister, Master's Degree and state examination. Doctorates are indicated separately.

Government funding for educational quality

Government funding for educational quality are compensation payments from the state of Lower Saxony for the discontinued study fees, in order to continue to improve the quality of teaching and the study conditions at the Lower-Saxon universities. The state dynamically adjusts the funds to the number of students. They are amicably divided between the committee for government funding for educational quality (50% of the members are students) and the Executive Committee at TU Braunschweig.

International students

International students are students with foreign nationalities.

PaL

The profit and loss statement (PaL) is a comparison of the expenses and income in a year to determine the result of the university. It is compiled according to the rules of the Commercial Code (Handelsgesetzbuch; HGB).

Special funds of the state

Available funds of the Lower Saxon Ministry for science and culture (Ministerium für Wissenschaft und Kultur; MWK) for certain measures, such as government funding for educational quality and university pact funds result from items 1b and 2b of the PaL.

Staff

A university's staff include scientific and artistic, as well as non-scientific staff. They are broken down into full- and part-time and indicated as a head count.

STEM

Short for: science, technology, engineering and mathematics.

Students

Students are the students enrolled in a study programme in the respective winter semester, minus those on leave. The students are indicated as a head count.

Study fees

In Lower Saxony, a tuition fee of EUR 500.00 per semester has been charged for students from winter semester 2006/2007 to summer semester 2014. The funds have been used to improve teaching. This fee was discontinued as of WS 2014/2015 and replaced by the government funding for educational quality.

Study semester

Study semesters are any semesters that are completed to take a university examination in a specific study programme.

Summer semester

The summer semester is from 01 April to 30 September of a year.

Third-party funding

Third-party funding is funding that is acquired for promoting research and development, as well as junior researchers and teaching, in addition to the regular university budget (basic equipment) of public and private providers (except for the state of Lower Saxony). Third-party funding does not include funds from donations/sponsoring and for scholarships. These are third-party income indicated in items 1c, 2c and 4a of the PaL.

Useful area

The useful area is the total of the area that serves a building's purpose (e.g. for work or accommodation purposes, NF 1 to 6).

Winter semester

The winter semester is from 01 October of a year until 31 March of the following year.

Publisher:

Technische Universität Braunschweig

Editorial office:

Executive department university controlling

Anja Kübler

Spielmannstraße 20

D-38106 Braunschweig

phone + 49 (0) 531-391 4117

a.kuebler@tu-braunschweig.de